



**Water Monitoring Result at C7 - Windsor House  
Mid-Flood Tide**

Date	Time	Weather Condition	Sampling Depth		Water Temperature			pH			Salinity			DO Saturation			DO			Turbidity			Suspended Solids	
			m		°C		-		ppt		%		mg/L		NTU		mg/L							
					Value	Average	Value	Average	Value	Average	Value	Average	Value	Average	Value	Average	Value	Average	Value	Average				
30/3/2015	16:05	Fine	Middle	-	22.00	22.00	22.15	8.04	8.04	8.04	32.31	32.31	32.31	66.5	66.7	66.7	4.80	4.81	4.82	7.28	7.26	7.29	2	2.00
	16:07		Middle	-	22.30	22.30		8.04	8.04		32.30	32.30		67.2	66.5		4.85	4.80		7.35	7.27		2	
1/4/2015	16:45	Fine	Middle	-	22.90	22.90	23.05	7.99	7.99	7.99	32.15	32.15	32.15	71.3	70.2	70.8	5.07	4.99	5.03	2.64	2.60	2.62	<2	<2
	16:47		Middle	-	23.20	23.20		7.99	7.99		32.14	32.14		70.1	71.5		4.98	5.07		2.62	2.63		<2	
3/4/2015	17:43	Cloudy	Middle	-	23.60	23.60	23.60	8.00	8.00	8.00	32.21	32.21	32.21	75.9	77.7	77.0	5.35	5.47	5.42	3.08	3.11	3.07	<2	<2
	17:44		Middle	-	23.60	23.60		7.99	7.99		32.21	32.21		77.0	77.3		5.42	5.44		3.06	3.02		<2	
7/4/2015	7:06	Cloudy	Middle	-	24.40	24.40	24.40	7.91	7.91	7.91	32.06	32.06	32.07	81.8	81.9	81.7	5.69	5.70	5.69	2.54	2.58	2.48	2	2.00
	7:07		Middle	-	24.40	24.40		7.91	7.91		32.07	32.07		81.7	81.4		5.69	5.67		2.47	2.32		<2	
9/4/2015	8:05	Cloudy	Middle	-	21.20	21.20	21.10	8.15	8.15	8.16	32.59	32.59	32.60	65.0	66.6	66.1	4.78	4.90	4.86	2.51	2.50	2.51	3	4.00
	8:07		Middle	-	21.00	21.00		8.16	8.16		32.61	32.61		66.3	66.4		4.88	4.88		2.50	2.51		5	
11/4/2015	11:10	Cloudy	Middle	-	21.00	21.00	20.95	8.14	8.14	8.14	32.36	32.36	32.36	71.3	72.0	71.3	5.27	5.32	5.27	2.14	2.14	2.15	3	3.50
	11:12		Middle	-	20.90	20.90		8.14	8.14		32.36	32.36		71.4	70.4		5.28	5.20		2.15	2.16		4	
13/4/2015	12:51	Fine	Middle	-	22.90	22.90	22.90	8.11	8.11	8.11	32.83	32.83	32.83	62.6	63.7	62.5	4.46	4.53	4.45	4.07	4.06	4.05	6	6.00
	12:53		Middle	-	22.90	22.90		8.11	8.11		32.83	32.83		61.8	61.7		4.40	4.39		4.04	4.04		6	
15/4/2015	15:45	Fine	Middle	-	23.20	23.20	23.23	8.10	8.10	8.10	32.73	32.73	32.73	66.7	69.6	69.0	4.72	4.92	4.87	2.99	2.99	2.99	5	5.00
	15:47		Middle	-	23.20	23.30		8.10	8.10		32.73	32.73		69.7	70.1		4.92	4.93		3.04	2.94		5	
17/4/2015	18:00	Fine	Middle	-	23.60	23.60	23.65	8.09	8.09	8.09	32.49	32.49	32.49	67.2	67.2	66.8	4.72	4.73	4.70	3.07	3.02	3.02	8	7.00
	18:02		Middle	-	23.70	23.70		8.08	8.08		32.49	32.49		66.1	66.7		4.65	4.69		3.00	3.00		6	
20/4/2015	16:52	Cloudy	Middle	-	25.10	25.10	25.10	8.15	8.15	8.15	31.48	31.48	31.48	85.6	86.2	85.0	5.91	5.95	5.87	2.56	2.58	2.62	2	2.00
	16:53		Middle	-	25.10	25.10		8.14	8.14		31.48	31.48		84.8	83.3		5.85	5.75		2.62	2.70		2	
22/4/2015	9:10	Cloudy	Middle	-	23.40	23.40	23.45	7.95	7.95	7.95	32.19	32.19	32.24	64.5	65.6	66.9	4.55	4.64	4.72	2.00	2.01	2.01	4	4.50
	9:12		Middle	-	23.50	23.50		7.94	7.94		32.29	32.29		68.6	68.8		4.84	4.85		2.01	2.01		5	
24/4/2015	10:37	Fine	Middle	-	23.90	23.90	23.95	7.99	7.99	7.99	32.74	32.74	32.74	70.8	68.0	67.5	4.95	4.75	4.73	1.67	1.67	1.76	3	3.00
	10:39		Middle	-	24.00	24.00		7.98	7.98		32.74	32.74		66.2	65.0		4.64	4.56		1.84	1.86		3	
28/4/2015	3:11	Fine	Middle	-	24.10	24.10	24.15	8.18	8.18	8.18	32.07	32.07	32.07	85.7	84.1	84.8	5.98	5.87	5.92	2.94	2.84	2.84	4	3.50
	3:12		Middle	-	24.20	24.20		8.17	8.17		32.07	32.07		83.2	86.3		5.81	6.02		2.82	2.76		3	

Remarks:  
Single underline denotes exceedance over Action Level.  
Double underline denotes exceedance over Limit Level.



**Water Monitoring Result at C1 - HKCEC Extension  
Mid-Flood Tide**

Date	Time	Weather Condition	Sampling Depth		Water Temperature		pH		Salinity		DO Saturation		DO		Turbidity		Suspended Solids							
			m		°C		-		ppt		%		mg/L		NTU		mg/L							
					Value	Average	Value	Average	Value	Average	Value	Average	Value	Average	Value	Average	Value	Average						
30/3/2015	15:15	Fine	Middle	2.5	21.50	21.50	21.55	8.08	8.08	8.08	32.41	32.41	32.41	58.4	58.6	58.5	4.26	4.28	4.27	1.56	1.53	1.52	3	3.00
	15:17		Middle	2.5	21.60	21.60		8.08	8.08		32.40	32.40		59.2	57.8		4.32	4.21		1.50	1.47		3	
1/4/2015	15:50	Fine	Middle	2.5	22.70	22.70	22.85	8.08	8.08	8.09	32.41	32.41	32.37	67.4	65.8	66.2	4.91	4.70	4.75	2.73	2.70	2.73	<2	<2
	15:52		Middle	2.5	23.00	23.00		8.09	8.09		32.32	32.32		65.1	66.3		4.65	4.73		2.73	2.74		<2	
3/4/2015	16:57	Cloudy	Middle	2.0	24.10	24.10	24.10	7.95	7.95	7.95	32.20	32.20	32.19	76.6	76.5	77.1	5.36	5.35	5.40	2.45	2.43	2.39	3	3.00
	16:58		Middle	2.0	24.10	24.10		7.95	7.95		32.18	32.18		77.1	78.1		5.39	5.49		2.36	2.32		3	
7/4/2015	10:23	Cloudy	Middle	2.5	23.10	23.10	23.10	7.93	7.93	7.93	32.49	32.49	32.50	72.6	72.1	72.7	5.15	5.12	5.16	3.16	3.21	3.12	4	3.50
	10:24		Middle	2.5	23.10	23.10		7.93	7.93		32.51	32.51		73.0	73.2		5.18	5.19		3.04	3.06		3	
9/4/2015	10:10	Cloudy	Middle	3.0	21.40	21.40	21.35	8.62	8.62	8.51	33.00	33.00	33.01	72.5	72.3	71.1	5.29	5.28	5.19	2.72	2.72	2.75	4	3.50
	10:12		Middle	3.0	21.30	21.30		8.40	8.40		33.01	33.01		68.3	71.2		4.99	5.20		2.75	2.80		3	
11/4/2015	10:34	Cloudy	Middle	3.0	20.80	20.80	20.75	8.18	8.18	8.18	32.57	32.57	32.58	61.1	61.3	60.7	4.52	4.53	4.49	2.29	2.34	2.33	4	3.00
	10:35		Middle	3.0	20.70	20.70		8.18	8.18		32.58	32.58		60.4	60.0		4.47	4.43		2.36	2.34		2	
13/4/2015	10:30	Fine	Middle	2.5	21.90	21.90	21.85	8.11	8.11	8.12	32.88	32.88	32.89	64.9	64.3	63.2	4.70	4.66	4.57	2.99	3.07	3.06	4	4.00
	10:32		Middle	2.5	21.80	21.80		8.13	8.13		32.90	32.90		62.4	61.2		4.50	4.43		3.09	3.08		4	
15/4/2015	14:48	Fine	Middle	2.5	22.80	22.80	22.95	8.15	8.15	8.15	32.91	32.91	32.87	58.0	60.0	58.2	4.13	4.27	4.14	3.23	3.22	3.22	4	4.50
	14:50		Middle	2.5	23.10	23.10		8.15	8.15		32.82	32.82		58.1	56.7		4.13	4.03		3.21	3.20		5	
17/4/2015	17:06	Fine	Middle	2.5	23.40	23.40	23.40	8.19	8.19	8.19	32.37	32.37	32.43	60.9	60.5	59.8	4.29	4.27	4.22	2.16	2.10	2.07	4	3.50
	17:08		Middle	2.5	23.40	23.40		8.19	8.19		32.48	32.48		59.2	58.4		4.19	4.12		1.96	2.04		3	
20/4/2015	17:25	Cloudy	Middle	2.5	24.80	24.80	18.60	7.70	7.70	7.72	31.72	31.72	31.74	78.1	79.0	78.7	5.41	5.47	5.45	2.62	2.59	2.56	5	5.00
	17:27		Middle	2.5	0.00	24.80		7.73	7.73		31.76	31.76		78.8	78.8		5.46	5.46		2.59	2.42		5	
22/4/2015	8:03	Cloudy	Middle	2.5	22.90	22.90	22.90	7.99	7.99	7.99	32.49	32.50	32.50	66.0	65.2	64.4	4.71	4.65	4.59	2.16	2.23	2.23	4	4.50
	8:05		Middle	2.5	22.90	22.90		7.99	7.99		32.51	32.51		63.7	62.5		4.54	4.46		2.25	2.27		5	
24/4/2015	9:58	Fine	Middle	2.5	23.10	23.10	23.15	7.98	7.98	7.98	32.81	32.81	32.50	64.9	63.8	63.0	4.60	4.61	4.51	1.99	2.00	2.05	5	5.00
	10:00		Middle	2.5	23.20	23.20		7.98	7.98		32.18	32.18		61.9	61.5		4.41	4.40		2.09	2.12		5	
28/4/2015	2:26	Fine	Middle	2.0	24.20	24.20	24.25	8.03	8.03	8.05	31.62	31.62	31.61	94.5	92.0	93.2	6.60	6.42	6.50	2.82	2.74	2.68	3	3.00
	2:27		Middle	2.0	24.30	24.30		8.06	8.06		31.60	31.60		93.3	92.9		6.51	6.48		2.59	2.56		3	

Remarks:  
Single underline denotes exceedance over Action Level.  
Double underline denotes exceedance over Limit Level.



**Water Monitoring Result at P1 - HKCEC Phase I  
Mid-Flood Tide**

Date	Time	Weather Condition	Sampling Depth		Water Temperature			pH			Salinity			DO Saturation			DO			Turbidity			Suspended Solids	
			m		°C		-		ppt		%		mg/L		NTU		mg/L							
					Value	Average	Value	Average	Value	Average	Value	Average	Value	Average	Value	Average	Value	Average	Value	Average				
30/3/2015	15:02	Fine	Middle	2.5	21.90	21.90	22.00	8.07	8.07	8.07	32.42	32.42	32.41	62.0	63.6	61.9	4.48	4.60	4.47	2.19	2.26	2.25	<2	<2
	15:04		Middle	2.5	22.10	22.10		8.07	8.07		32.40	32.40		62.4	59.6		4.51	4.30		2.26	2.27			
1/4/2015	15:53	Fine	Middle	2.5	22.50	22.50	22.50	8.11	8.11	8.11	32.32	32.32	32.32	67.7	67.9	67.3	4.86	4.87	4.83	2.74	2.73	2.70	4	4.50
	15:55		Middle	2.5	22.50	22.50		8.11	8.11		32.31	32.31		67.3	66.1		4.83	4.74		2.66	2.68		5	
3/4/2015	16:33	Cloudy	Middle	2.0	24.50	24.50	24.50	7.98	7.98	7.99	32.12	32.12	32.13	80.0	80.5	80.9	5.56	5.59	5.79	2.13	2.16	2.07	4	3.50
	16:34		Middle	2.0	24.50	24.50		7.99	7.99		32.14	32.14		81.3	81.6		5.95	6.04		2.01	1.97		3	
7/4/2015	10:03	Cloudy	Middle	2.5	23.80	23.80	23.80	7.90	7.90	7.90	32.45	32.45	32.40	72.4	73.9	73.6	5.09	5.19	5.17	2.86	2.62	2.66	2	2.50
	10:04		Middle	2.5	23.80	23.80		7.90	7.90		32.34	32.34		74.2	73.7		5.22	5.18		2.60	2.56		3	
9/4/2015	10:30	Cloudy	Middle	3.0	21.30	21.30	21.30	8.24	8.24	8.24	32.54	32.54	32.56	74.3	73.5	73.3	5.44	5.38	5.37	1.89	1.87	1.87	4	4.00
	10:32		Middle	3.0	21.30	21.30		8.23	8.23		32.57	32.57		73.2	72.0		5.36	5.28		1.86	1.86		4	
11/4/2015	10:22	Cloudy	Middle	3.0	20.30	20.30	20.25	8.15	8.15	8.16	32.38	32.38	32.41	62.0	57.9	59.1	4.65	4.33	4.42	2.98	3.02	3.01	5	4.50
	10:24		Middle	3.0	20.20	20.20		8.17	8.17		32.43	32.43		58.3	58.0		4.36	4.34		3.01	3.02		4	
13/4/2015	10:55	Fine	Middle	2.5	21.80	21.80	21.80	8.17	8.17	8.17	32.83	32.83	32.83	56.5	55.9	56.1	4.09	4.05	4.07	2.36	2.56	2.59	5	4.50
	10:57		Middle	2.5	21.80	21.80		8.17	8.17		32.83	32.84		55.8	56.3		4.04	4.08		2.73	2.71		4	
15/4/2015	14:36	Fine	Middle	2.5	23.60	23.60	23.80	8.14	8.14	8.16	33.27	33.27	33.16	61.3	61.3	62.9	4.29	4.28	4.38	3.74	3.74	3.73	5	5.00
	14:38		Middle	2.5	24.00	24.00		8.17	8.17		33.04	33.04		64.7	64.1		4.51	4.45		3.72	3.72		5	
17/4/2015	16:53	Fine	Middle	2.5	24.10	24.10	24.20	8.16	8.16	8.18	32.59	32.59	32.55	65.9	64.2	64.5	4.59	4.46	4.49	2.40	2.37	2.36	4	4.50
	16:55		Middle	2.5	24.30	24.30		8.20	8.20		32.51	32.51		64.0	63.8		4.45	4.44		2.34	2.33		5	
20/4/2015	17:05	Cloudy	Middle	2.5	26.00	26.00	26.05	7.40	7.40	7.44	31.63	31.63	31.64	82.9	82.2	82.0	5.71	5.66	5.65	2.47	2.32	2.46	6	5.00
	17:27		Middle	2.5	26.10	26.10		7.47	7.47		31.64	31.64		81.7	81.1		5.63	5.59		2.56	2.47		4	
22/4/2015	7:45	Cloudy	Middle	2.5	22.70	22.70	22.70	7.94	7.94	7.99	32.96	32.96	32.86	62.5	60.0	60.5	4.45	4.28	4.32	1.91	1.86	1.85	4	4.00
	7:47		Middle	2.5	22.70	22.70		8.04	8.04		32.76	32.77		60.0	59.6		4.28	4.25		1.83	1.80		4	
24/4/2015	9:32	Fine	Middle	2.5	23.40	23.40	23.45	7.91	7.91	7.92	32.29	32.29	32.52	71.0	70.2	71.0	5.10	5.05	5.03	1.70	1.71	1.69	5	4.50
	9:34		Middle	2.5	23.50	23.50		7.93	7.93		32.74	32.74		71.8	70.8		4.99	4.99		1.69	1.67		4	
28/4/2015	1:55	Fine	Middle	2.0	24.20	24.20	24.20	8.22	8.22	8.22	31.76	31.76	31.76	93.3	92.9	92.2	6.51	6.47	6.43	2.12	2.10	2.20	3	4.00
	1:56		Middle	2.0	24.20	24.20		8.22	8.22		31.76	31.76		91.6	90.8		6.40	6.34		2.24	2.34		5	

Remarks:  
Single underline denotes exceedance over Action Level.  
Double underline denotes exceedance over Limit Level.



**Water Monitoring Result at P3 - APA  
Mid-Flood Tide**

Date	Time	Weather Condition	Sampling Depth		Water Temperature			pH			Salinity			DO Saturation			DO			Turbidity			Suspended Solids	
			m		°C		-		ppt		%		mg/L		NTU		mg/L							
					Value	Average	Value	Average	Value	Average	Value	Average	Value	Average	Value	Average	Value	Average	Value	Average				
30/3/2015	15:05	Fine	Middle	2.5	21.60	21.60	21.70	8.07	8.07	8.07	32.43	32.43	32.42	59.0	57.7	57.5	4.30	4.20	4.18	1.45	1.49	1.44	<2	<2
	15:07		Middle	2.5	21.80	21.80		8.07	8.07		32.41	32.41		56.1	57.0		4.08	4.15		1.47	1.36		<2	
1/4/2015	15:56	Fine	Middle	2.5	22.50	22.50	22.50	8.12	8.12	8.13	32.28	32.28	32.28	68.8	68.0	68.2	4.95	4.88	4.90	2.81	2.77	2.78	3	3.00
	15:58		Middle	2.5	22.50	22.50		8.13	8.13		32.27	32.27		68.2	67.7		4.90	4.86		2.75	2.77		3	
3/4/2015	16:38	Cloudy	Middle	2.0	24.30	24.30	24.30	8.01	8.00	8.01	32.19	32.19	32.20	80.7	81.3	80.8	5.62	5.66	5.64	2.78	2.62	2.61	4	3.50
	16:39		Middle	2.0	24.30	24.30		8.00	8.01		32.21	32.21		81.2	80.0		5.65	5.62		2.54	2.50		3	
7/4/2015	10:09	Cloudy	Middle	2.5	23.50	23.50	23.50	7.95	7.95	7.95	32.46	32.46	32.48	76.7	77.3	76.9	5.41	5.46	5.43	2.45	2.43	2.40	3	3.00
	10:10		Middle	2.5	23.50	23.50		7.95	7.95		32.49	32.49		77.1	76.6		5.44	5.40		2.36	2.34		3	
9/4/2015	10:22	Cloudy	Middle	3.0	21.30	21.30	21.30	8.28	8.27	8.26	32.55	32.55	32.56	69.3	67.7	66.8	5.08	4.96	4.90	2.45	2.46	2.47	2	2.50
	10:24		Middle	3.0	21.30	21.30		8.24	8.24		32.57	32.57		66.2	64.0		4.85	4.69		2.46	2.49		3	
11/4/2015	10:25	Cloudy	Middle	3.0	20.50	20.50	20.50	8.16	8.16	8.16	32.57	32.57	32.58	55.7	55.4	55.4	4.14	4.12	4.12	2.72	2.73	2.71	6	5.00
	10:27		Middle	3.0	20.50	20.50		8.16	8.16		32.58	32.58		55.4	55.0		4.12	4.09		2.71	2.69		4	
13/4/2015	10:49	Fine	Middle	2.5	21.70	21.70	21.70	8.17	8.17	8.17	32.84	32.84	32.84	58.0	57.1	57.3	4.21	4.14	4.16	2.14	2.02	2.03	4	4.00
	10:51		Middle	2.5	21.70	21.70		8.16	8.16		32.84	32.84		56.9	57.0		4.13	4.14		1.98	1.96		4	
15/4/2015	14:39	Fine	Middle	2.5	23.10	23.10	23.20	8.16	8.16	8.16	33.09	33.09	33.06	61.2	60.7	61.6	4.33	4.29	4.35	3.06	3.05	3.07	5	5.50
	14:41		Middle	2.5	23.30	23.30		8.16	8.16		33.02	33.02		60.2	64.3		4.25	4.54		3.06	3.11		6	
17/4/2015	16:56	Fine	Middle	2.5	23.70	23.70	23.65	8.19	8.19	8.19	32.49	32.49	32.55	62.4	60.7	60.0	4.40	4.28	4.23	2.17	2.15	2.12	5	4.50
	16:58		Middle	2.5	23.60	23.60		8.18	8.18		32.60	32.60		58.8	57.9		4.15	4.09		2.14	2.03		4	
20/4/2015	17:10	Cloudy	Middle	2.5	24.40	24.40	24.50	7.52	7.52	7.54	31.58	31.58	31.65	79.4	79.5	79.1	5.53	5.53	5.50	2.78	2.74	2.66	4	4.00
	17:12		Middle	2.5	24.60	24.60		7.56	7.56		31.71	31.71		78.7	78.8		5.46	5.47		2.63	2.47		4	
22/4/2015	7:50	Cloudy	Middle	2.5	22.60	22.60	22.60	8.03	8.03	8.01	32.50	32.50	32.51	62.6	61.4	60.0	4.48	4.40	4.30	1.22	1.22	1.22	4	4.00
	7:52		Middle	2.5	22.60	22.60		7.98	7.98		32.52	32.52		57.8	58.1		4.14	4.16		1.22	1.22		4	
24/4/2015	9:36	Fine	Middle	2.5	23.10	23.10	23.15	7.94	7.94	7.95	32.17	32.17	32.18	67.1	65.7	64.8	4.75	4.65	4.59	1.21	1.22	1.22	3	2.50
	9:38		Middle	2.5	23.20	23.20		7.95	7.95		32.18	32.18		63.7	62.7		4.51	4.45		1.22	1.22		2	
28/4/2015	2:04	Fine	Middle	2.0	24.10	24.10	24.15	8.25	8.25	8.25	31.76	31.76	31.76	92.5	93.1	92.3	6.47	6.51	6.45	2.01	1.87	1.92	3	3.50
	2:05		Middle	2.0	24.20	24.20		8.26	8.25		31.76	31.76		92.0	91.5		6.43	6.40		1.84	1.95		4	

Remarks:  
Single underline denotes exceedance over Action Level.  
Double underline denotes exceedance over Limit Level.



**Water Monitoring Result at P4 - SOC  
Mid-Flood Tide**

Date	Time	Weather Condition	Sampling Depth		Water Temperature		pH			Salinity		DO Saturation		DO		Turbidity		Suspended Solids						
					°C		-		ppt		%		mg/L		NTU		mg/L							
			m	Value	Average	Value	Average	Value	Average	Value	Average	Value	Average	Value	Average	Value	Average	Value	Average					
30/3/2015	15:08	Fine	Middle	2.5	21.50	21.50	21.55	8.08	8.08	8.08	32.46	32.46	32.45	58.3	59.7	60.1	4.26	4.36	4.39	1.27	1.25	1.25	<2	<2
	15:10		Middle	2.5	21.60	21.60		8.08	8.08		32.44	32.44		61.0	61.2		4.45	4.47		1.24	1.24		<2	
1/4/2015	16:00	Fine	Middle	2.5	22.30	22.30	22.35	8.14	8.14	8.14	32.28	32.28	32.28	67.4	67.0	66.8	4.86	4.82	4.81	2.65	2.53	2.58	2	2.50
	16:02		Middle	2.5	22.40	22.40		8.14	8.14		32.27	32.27		66.5	66.2		4.79	4.77		2.54	2.58		3	
3/4/2015	16:43	Cloudy	Middle	2.0	24.20	24.20	24.20	8.02	8.02	8.02	32.19	32.19	32.21	81.0	83.5	82.5	5.90	6.10	5.93	2.19	2.26	2.32	3	3.00
	16:44		Middle	2.0	24.20	24.20		8.02	8.02		32.22	32.22		83.3	82.1		5.85	5.88		2.40	2.43		3	
7/4/2015	10:14	Cloudy	Middle	2.5	23.30	23.30	23.30	7.94	7.94	7.94	32.11	32.11	32.21	82.8	83.8	83.2	5.90	6.02	5.98	4.14	4.11	4.09	2	2.00
	10:15		Middle	2.5	23.30	23.30		7.94	7.94		32.30	32.30		83.7	82.5		6.03	5.95		4.09	4.02		2	
9/4/2015	10:17	Cloudy	Middle	3.0	21.30	21.30	21.30	8.31	8.31	8.30	32.65	32.65	32.67	73.0	72.3	72.7	5.35	5.30	5.32	3.19	3.18	3.18	4	3.50
	10:19		Middle	3.0	21.30	21.30		8.28	8.28		32.68	32.68		72.5	72.8		5.31	5.33		3.18	3.18		3	
11/4/2015	10:28	Cloudy	Middle	3.0	20.50	20.50	20.55	8.18	8.18	8.18	32.53	32.53	32.54	52.5	51.1	51.3	3.90	3.80	3.82	2.98	2.97	2.97	3	2.50
	10:30		Middle	3.0	20.60	20.60		8.18	8.18		32.55	32.55		51.0	50.7		3.80	3.77		2.96	2.96		2	
13/4/2015	10:42	Fine	Middle	2.5	21.80	21.80	21.80	8.17	8.17	8.17	32.83	32.83	32.84	62.5	61.4	61.5	4.53	4.45	4.45	2.01	1.99	1.98	3	3.50
	10:44		Middle	2.5	21.80	21.80		8.16	8.16		32.84	32.84		60.9	61.0		4.41	4.42		1.97	1.96		4	
15/4/2015	14:42	Fine	Middle	2.5	23.10	23.10	23.15	8.16	8.16	8.16	32.88	32.88	32.86	63.4	62.2	62.2	4.49	4.41	4.41	3.36	3.31	3.30	6	6.00
	14:44		Middle	2.5	23.20	23.20		8.16	8.16		32.84	32.84		61.9	61.4		4.38	4.35		3.26	3.25		6	
17/4/2015	17:00	Fine	Middle	2.5	23.50	23.50	23.50	8.18	8.18	8.19	32.47	32.47	32.47	60.6	61.7	61.4	4.27	4.35	4.33	2.36	2.46	2.38	4	5.00
	17:02		Middle	2.5	23.50	23.50		8.19	8.19		32.47	32.47		61.6	61.5		4.34	4.34		2.35	2.34		6	
20/4/2015	17:15	Cloudy	Middle	2.5	24.60	24.60	24.65	7.59	7.59	7.56	31.75	31.75	31.75	82.6	82.5	81.9	5.74	5.72	5.68	2.72	2.62	2.68	4	4.50
	17:17		Middle	2.5	24.70	24.70		7.52	7.52		31.75	31.75		81.5	81.0		5.65	5.61		2.73	2.63		5	
22/4/2015	7:54	Cloudy	Middle	2.5	22.70	22.70	22.70	7.99	7.99	7.99	32.49	32.49	32.50	68.1	67.0	66.0	4.87	4.76	4.71	2.60	2.58	2.66	6	6.00
	7:56		Middle	2.5	22.70	22.70		7.99	7.99		32.50	32.50		65.0	63.8		4.64	4.56		2.63	2.83		6	
24/4/2015	9:42	Fine	Middle	2.5	23.10	23.10	23.15	7.95	7.95	7.96	32.61	32.61	32.69	69.2	67.0	66.3	4.90	4.74	4.69	3.17	3.07	3.02	5	5.50
	9:44		Middle	2.5	23.20	23.20		7.96	7.96		32.77	32.77		65.1	63.8		4.61	4.52		2.94	2.91		6	
28/4/2015	2:10	Fine	Middle	2.0	23.90	23.90	23.95	8.28	8.28	8.28	31.76	31.76	31.76	92.2	93.3	92.6	6.47	6.55	6.50	2.51	2.49	2.42	3	3.00
	2:11		Middle	2.0	24.00	24.00		8.28	8.28		31.75	31.75		91.3	93.6		6.40	6.56		2.35	2.31		3	

Remarks:  
Single underline denotes exceedance over Action Level.  
Double underline denotes exceedance over Limit Level.



**Water Monitoring Result at P5 - WCT / RT / IT  
Mid-Flood Tide**

Date	Time	Weather Condition	Sampling Depth		Water Temperature		pH			Salinity		DO Saturation		DO		Turbidity		Suspended Solids						
			m		°C		-		ppt		%		mg/L		NTU		mg/L							
					Value	Average	Value	Average	Value	Average	Value	Average	Value	Average	Value	Average	Value	Average						
30/3/2015	15:11	Fine	Middle	2.5	21.50	21.50	21.55	8.09	8.09	8.09	32.40	32.40	32.40	63.1	62.5	62.6	4.61	4.56	4.57	2.56	2.55	2.55	<2	<2
	15:13		Middle	2.5	21.60	21.60		8.09	8.09		32.39	32.39		62.5	62.1		4.57	4.53		2.54	2.55		<2	
1/4/2015	16:04	Fine	Middle	2.5	22.30	22.30	22.33	8.12	8.12	8.12	32.32	32.32	32.31	64.9	64.8	64.2	4.57	4.57	4.55	2.87	2.95	2.81	3	3.00
	16:06		Middle	2.5	22.40	22.30		8.12	8.12		32.30	32.30		64.6	62.3		4.55	4.49		2.74	2.68		3	
3/4/2015	16:51	Cloudy	Middle	2.0	24.20	24.20	24.25	8.03	8.03	8.03	32.00	32.00	32.12	78.5	79.4	78.6	5.82	5.89	5.82	2.25	2.08	2.13	2	2.00
	16:52		Middle	2.0	24.30	24.30		8.03	8.03		32.23	32.23		79.0	77.6		5.83	5.75		2.12	2.06		2	
7/4/2015	10:19	Cloudy	Middle	2.5	23.10	23.10	23.10	7.96	7.96	7.97	32.25	32.25	32.40	73.1	74.9	74.6	5.19	5.37	5.33	3.97	3.92	3.84	4	3.50
	10:20		Middle	2.5	23.10	23.10		7.97	7.97		32.54	32.54		74.8	75.7		5.38	5.37		3.80	3.65		3	
9/4/2015	10:13	Cloudy	Middle	3.0	21.30	21.30	21.30	8.32	8.32	8.32	32.77	32.77	32.78	73.6	74.1	73.7	5.39	5.42	5.40	2.95	2.94	2.94	5	4.00
	10:15		Middle	3.0	21.30	21.30		8.31	8.31		32.79	32.79		73.9	73.2		5.41	5.36		2.95	2.90		3	
11/4/2015	10:31	Cloudy	Middle	3.0	20.70	20.70	20.70	8.19	8.19	8.19	32.55	32.55	32.56	55.0	54.1	53.7	4.08	4.01	3.98	4.89	4.86	4.85	4	3.50
	10:33		Middle	3.0	20.70	20.70		8.19	8.19		32.56	32.56		53.3	52.4		3.95	3.89		4.84	4.82		3	
13/4/2015	10:35	Fine	Middle	2.5	21.90	21.90	21.90	8.15	8.15	8.15	32.81	32.82	32.84	60.0	59.0	60.6	4.34	4.27	4.39	2.47	2.44	2.41	3	3.50
	10:37		Middle	2.5	21.90	21.90		8.15	8.15		32.86	32.85		60.9	62.4		4.41	4.52		2.38	2.36		4	
15/4/2015	14:45	Fine	Middle	2.5	23.00	23.00	23.05	8.16	8.16	8.16	32.92	32.92	32.92	57.7	57.5	56.6	4.09	4.07	4.01	4.39	4.35	4.41	6	6.00
	14:47		Middle	2.5	23.10	23.10		8.16	8.16		32.92	32.92		56.4	54.9		4.00	3.89		4.43	4.45		6	
17/4/2015	17:03	Fine	Middle	2.5	23.40	23.40	23.45	8.20	8.20	8.20	32.49	32.49	32.48	61.5	61.8	61.2	4.34	4.37	4.32	2.73	2.93	2.82	6	5.50
	17:05		Middle	2.5	23.50	23.50		8.20	8.20		32.47	32.47		60.7	60.9		4.28	4.30		2.88	2.72		5	
20/4/2015	17:20	Cloudy	Middle	2.5	24.60	24.60	24.65	7.65	7.65	7.67	31.72	31.72	31.73	78.5	77.8	77.3	5.46	5.39	5.62	2.90	2.88	2.90	7	7.50
	17:22		Middle	2.5	24.70	24.70		7.68	7.68		31.73	31.73		77.0	76.0		5.34	6.27		2.91	2.91		8	
22/4/2015	7:58	Cloudy	Middle	2.5	22.90	22.90	22.90	7.99	7.99	7.99	32.51	32.51	32.53	66.3	62.5	62.1	4.01	4.45	4.25	3.30	3.30	3.30	5	5.00
	8:00		Middle	2.5	22.90	22.90		7.99	7.99		32.51	32.57		60.6	58.8		4.36	4.18		3.29	3.29		5	
24/4/2015	9:46	Fine	Middle	2.5	23.20	23.20	23.20	7.97	7.97	7.97	32.60	32.60	32.61	67.7	67.3	66.4	4.79	4.76	4.70	3.07	3.00	3.00	6	6.00
	9:48		Middle	2.5	23.20	23.20		7.97	7.97		32.61	32.61		65.9	64.7		4.66	4.58		2.94	2.99		6	
28/4/2015	2:18	Fine	Middle	2.0	24.00	24.00	24.00	8.27	8.27	8.27	31.76	31.76	31.76	91.0	92.5	91.7	6.38	6.49	6.43	2.15	2.27	2.38	3	3.50
	2:19		Middle	2.0	24.00	24.00		8.27	8.27		31.75	31.75		92.3	90.8		6.47	6.37		2.44	2.66		4	

Remarks:  
Single underline denotes exceedance over Action Level.  
Double underline denotes exceedance over Limit Level.



**Water Monitoring Result at RW21-P789 - Sun Hung Kai Centre  
Mid-Flood Tide**

Date	Time	Weather Condition	Sampling Depth		Water Temperature			pH			Salinity			DO Saturation			DO			Turbidity			Suspended Solids	
					°C		-		ppt		%		mg/L		NTU		mg/L							
			m	Value	Average	Value	Average	Value	Average	Value	Average	Value	Average	Value	Average	Value	Average	Value	Average	Value	Average			
30/3/2015	15:24	Fine	Middle	3.5	21.20	21.20	21.30	8.09	8.09	8.10	32.41	32.41	32.38	58.1	58.1	57.6	4.28	4.26	4.23	3.20	3.22	3.18	3	3.50
	15:26		Middle	3.5	21.40	21.40		8.10	8.10		32.35	32.35		57.3	57.0		4.20	4.18		3.14	3.14		4	
1/4/2015	16:12	Fine	Middle	3.5	22.00	22.00	22.10	8.14	8.14	8.15	32.35	32.34	32.30	60.6	58.7	59.7	4.38	4.24	4.31	3.74	3.54	3.63	3	3.00
	16:14		Middle	3.5	22.20	22.20		8.15	8.15		32.26	32.26		59.6	59.9		4.30	4.32		3.52	3.70		3	
3/4/2015	17:13	Cloudy	Middle	3.0	23.50	23.50	23.53	7.98	7.98	7.98	32.08	32.08	32.17	79.7	79.3	79.1	5.62	5.59	5.58	3.52	3.50	3.45	4	3.50
	17:14		Middle	3.0	23.60	23.50		7.98	7.98		32.25	32.25		79.2	78.0		5.60	5.49		3.44	3.35		3	
7/4/2015	8:05	Cloudy	Middle	3.5	24.10	24.10	24.10	7.89	7.89	7.89	32.24	32.24	32.24	75.1	76.8	75.5	5.28	5.31	5.26	3.13	3.00	3.11	3	3.50
	8:06		Middle	3.5	24.10	24.10		7.89	7.89		32.24	32.24		74.4	75.5		5.19	5.27		3.02	3.27		4	
9/4/2015	7:35	Cloudy	Middle	3.5	20.40	20.40	20.35	8.19	8.19	8.20	32.48	32.48	32.48	68.2	68.3	68.3	5.09	5.10	5.09	3.97	3.97	3.98	3	2.50
	7:37		Middle	3.5	20.30	20.30		8.20	8.20		32.48	32.48		67.6	69.0		5.03	5.13		3.98	3.99		2	
11/4/2015	10:42	Cloudy	Middle	3.0	21.00	21.00	20.95	8.30	8.30	8.31	32.69	32.69	32.71	57.9	57.2	56.7	4.26	4.21	4.17	5.33	5.33	5.41	7	6.50
	10:44		Middle	3.0	20.90	20.90		8.31	8.31		32.73	32.73		56.3	55.3		4.15	4.07		5.39	5.58		6	
13/4/2015	11:05	Fine	Middle	3.0	22.20	22.20	22.25	8.20	8.20	8.20	33.01	33.01	33.01	61.8	61.3	62.5	4.43	4.41	4.49	3.70	3.73	3.73	5	5.00
	11:07		Middle	3.0	22.30	22.30		8.20	8.20		33.00	33.00		62.7	64.0		4.50	4.60		3.75	3.74		5	
15/4/2015	15:00	Fine	Middle	3.5	23.10	23.10	23.15	8.14	8.14	8.15	32.98	32.98	32.98	67.7	66.8	67.2	4.79	4.72	4.76	3.18	3.15	3.16	7	6.50
	15:02		Middle	3.5	23.20	23.20		8.15	8.15		32.97	32.97		67.4	67.0		4.77	4.74		3.15	3.14		6	
17/4/2015	17:16	Fine	Middle	3.5	23.30	23.30	23.30	8.18	8.18	8.19	32.57	32.57	32.56	66.2	65.0	64.2	4.68	4.60	4.54	4.59	4.59	4.55	7	8.00
	17:18		Middle	3.5	23.30	23.30		8.20	8.20		32.55	32.55		63.5	62.0		4.49	4.38		4.50	4.50		9	
20/4/2015	17:09	Cloudy	Middle	3.0	24.90	24.90	24.95	8.14	8.14	8.15	31.52	31.52	31.53	85.4	86.3	85.0	5.90	5.96	5.87	4.09	3.85	3.83	4	4.00
	17:10		Middle	3.0	25.00	25.00		8.16	8.16		31.53	31.53		85.0	83.4		5.87	5.76		3.65	3.72		4	
22/4/2015	8:45	Cloudy	Middle	3.5	23.00	23.00	23.00	7.97	7.97	7.97	32.57	32.56	32.56	67.0	65.5	64.2	4.76	4.66	4.57	3.35	3.37	3.37	5	4.00
	8:47		Middle	3.5	23.00	23.00		7.97	7.97		32.56	32.56		62.7	61.7		4.46	4.38		3.38	3.39		3	
24/4/2015	10:11	Fine	Middle	3.5	23.20	23.20	23.25	7.95	7.96	7.96	32.78	32.78	32.77	62.1	61.4	60.7	4.39	4.35	4.29	1.56	1.58	1.51	5	5.00
	10:13		Middle	3.5	23.30	23.30		7.96	7.96		32.76	32.76		60.0	59.1		4.24	4.18		1.46	1.43		5	
28/4/2015	0:30	Fine	Middle	3.0	24.10	24.10	24.20	8.23	8.23	8.23	31.96	31.96	31.94	87.9	87.3	86.4	6.13	6.04	6.03	2.11	2.19	2.39	4	4.00
	0:31		Middle	3.0	24.30	24.30		8.22	8.22		31.92	31.92		85.6	84.8		5.97	5.99		2.88	2.39		4	

Remarks:  
Single underline denotes exceedance over Action Level.  
Double underline denotes exceedance over Limit Level.



**Water Monitoring Result at WSD19 - Sheung Wan  
Mid-Flood Tide**

Date	Time	Weather Condition	Sampling Depth		Water Temperature			pH			Salinity			DO Saturation		DO		Turbidity		Suspended Solids				
			m		°C		-		ppt		%		mg/L		NTU		mg/L							
					Value	Average	Value	Average	Value	Average	Value	Average	Value	Average	Value	Average	Value	Average						
30/3/2015	14:03	Fine	Middle	3.5	22.00	22.00	22.15	8.07	8.07	8.08	32.54	32.54	32.54	67.4	67.7	67.6	4.86	4.88	4.87	4.82	4.93	5.00	3	3.50
	14:05		Middle	3.5	22.30	22.30		8.09	8.09		32.53	32.53		67.4	67.7		4.86	4.88		5.13	5.11		4	
1/4/2015	15:19	Fine	Middle	3.5	23.10	23.10	23.20	8.19	8.19	8.19	32.27	32.27	32.26	61.0	61.2	61.2	4.33	4.35	4.35	5.36	5.34	5.33	11	10.50
	15:20		Middle	3.5	23.30	23.30		8.19	8.19		32.25	32.25		61.6	61.1		4.37	4.34		5.32	5.30		10	
3/4/2015	18:52	Cloudy	Middle	3.0	23.20	23.20	23.23	8.02	8.02	8.02	32.42	32.42	32.27	76.5	77.6	77.9	5.40	5.49	5.50	6.38	6.25	6.27	6	6.00
	18:53		Middle	3.0	23.30	23.20		8.01	8.01		32.11	32.11		78.8	78.6		5.57	5.55		6.24	6.22		6	
7/4/2015	9:17	Cloudy	Middle	3.0	24.70	24.70	24.75	7.83	7.83	7.83	32.10	32.10	32.10	84.5	84.8	84.0	5.89	5.89	5.80	4.47	4.51	4.41	3	3.50
	9:18		Middle	3.0	24.80	24.80		7.83	7.83		32.10	32.10		83.6	82.9		5.74	5.69		4.41	4.24		4	
9/4/2015	8:38	Cloudy	Middle	3.5	20.90	20.90	20.80	8.18	8.18	8.19	32.59	32.59	32.60	61.2	61.7	61.4	4.53	4.57	4.55	5.06	5.04	5.03	5	4.50
	8:40		Middle	3.5	20.70	20.70		8.19	8.19		32.61	32.61		62.0	60.8		4.59	4.50		5.02	5.00		4	
11/4/2015	9:30	Cloudy	Middle	3.0	20.20	20.20	20.10	8.17	8.17	8.14	32.71	32.71	32.72	67.1	67.9	67.2	5.02	5.08	5.03	7.05	7.16	7.15	5	4.50
	9:32		Middle	3.0	20.00	20.00		8.10	8.10		32.72	32.72		67.2	66.7		5.03	5.00		7.18	7.19		4	
13/4/2015	10:15	Fine	Middle	3.0	22.00	22.00	22.00	8.23	8.23	8.24	33.14	33.14	33.15	65.1	65.5	65.7	4.70	4.73	4.73	6.34	6.19	6.26	5	5.00
	10:17		Middle	3.0	22.00	22.00		8.24	8.24		33.15	33.15		65.9	66.2		4.74	4.76		6.19	6.33		5	
15/4/2015	13:45	Fine	Middle	3.0	23.50	23.50	23.50	8.20	8.20	8.21	33.08	33.08	33.09	68.0	68.5	68.8	4.77	4.81	4.83	3.87	3.84	3.90	7	6.00
	13:47		Middle	3.0	23.50	23.50		8.21	8.21		33.09	33.09		69.5	69.2		4.88	4.86		3.95	3.95		5	
17/4/2015	15:50	Fine	Middle	3.5	23.80	23.80	23.95	8.21	8.21	8.21	32.54	32.54	32.53	69.3	65.9	66.9	4.82	4.61	4.67	6.22	6.26	6.30	9	10.00
	15:52		Middle	3.5	24.10	24.10		8.21	8.21		32.52	32.52		67.4	65.0		4.71	4.53		6.35	6.36		11	
20/4/2015	17:58	Cloudy	Middle	2.0	24.70	24.70	24.75	8.16	8.16	8.17	31.42	31.42	31.43	90.6	92.4	91.4	6.29	6.34	6.30	5.18	5.25	5.33	8	8.00
	17:59		Middle	2.0	24.80	24.80		8.17	8.17		31.43	31.43		92.0	90.5		6.30	6.28		5.48	5.39		8	
22/4/2015	9:53	Cloudy	Middle	3.0	23.20	23.20	23.25	7.90	7.90	7.91	32.53	32.53	32.54	66.2	65.5	65.0	4.69	4.64	4.60	1.75	1.72	1.72	2	2.50
	9:54		Middle	3.0	23.30	23.30		7.92	7.92		32.54	32.54		64.4	64.0		4.54	4.53		1.71	1.69		3	
24/4/2015	8:53	Fine	Middle	3.5	23.10	23.10	23.15	7.77	7.76	7.78	32.56	32.56	32.57	61.0	59.7	59.4	4.33	4.23	4.22	2.96	2.95	2.97	9	9.50
	8:55		Middle	3.5	23.20	23.20		7.80	7.80		32.57	32.57		58.7	58.2		4.17	4.13		2.97	2.98		10	
28/4/2015	23:58	Fine	Middle	2.5	24.30	24.30	24.35	8.20	8.20	8.21	31.71	31.71	31.71	90.8	92.4	91.7	6.33	6.44	6.39	3.71	3.82	3.81	3	3.50
	23:59		Middle	2.5	24.40	24.40		8.22	8.20		31.71	31.71		90.9	92.7		6.33	6.45		3.92	3.80		4	

Remarks:  
Single underline denotes exceedance over Action Level.  
Double underline denotes exceedance over Limit Level.





**Water Monitoring Result at C7 - Windsor House  
Mid-Ebb Tide**

Date	Time	Weather Condition	Sampling Depth		Water Temperature		pH			Salinity		DO Saturation		DO		Turbidity		Suspended Solids						
					°C		-			ppt		%		mg/L		NTU		mg/L						
					Value	Average	Value	Average	Value	Average	Value	Average	Value	Average	Value	Average	Value	Average	Value	Average				
30/3/2015	21:03	Cloudy	Middle	-	21.90	21.90	21.93	7.70	7.70	7.70	32.53	32.53	32.65	80.8	81.9	81.4	5.84	5.92	5.88	2.82	2.69	2.70	4	3.50
	21:04		Middle	-	22.00	21.90		7.70	7.70		32.77	32.77		81.5	81.2		5.89	5.87		2.66	2.64		3	
1/4/2015	9:50	Fine	Middle	-	22.20	22.20	22.30	7.99	7.99	7.99	32.23	32.23	32.23	63.2	64.3	64.6	4.56	4.64	4.66	5.55	5.59	5.43	3	3.00
	9:52		Middle	-	22.40	22.40		7.99	7.99		32.22	32.22		65.2	65.5		4.70	4.72		5.35	5.24		3	
3/4/2015	13:53	Sunny	Middle	-	24.50	24.50	24.55	7.80	7.80	7.80	32.36	32.37	32.37	76.4	76.7	77.7	5.28	5.31	5.38	3.16	3.03	3.05	3	3.00
	13:54		Middle	-	24.60	24.60		7.80	7.80		32.38	32.38		78.9	78.7		5.46	5.45		3.01	3.00		3	
7/4/2015	13:48	Cloudy	Middle	-	23.60	23.60	23.65	7.97	7.97	7.97	32.41	32.41	32.41	80.2	80.3	80.3	5.64	5.65	5.65	3.91	3.28	3.49	3	3.00
	13:49		Middle	-	23.70	23.70		7.97	7.97		32.41	32.41		80.3	80.2		5.65	5.64		3.35	3.40		3	
9/4/2015	15:15	Cloudy	Middle	-	21.50	21.50	21.50	8.15	8.15	8.16	32.44	32.44	32.45	66.1	67.1	66.4	4.83	4.91	4.85	3.70	3.66	3.66	2	2.00
	15:17		Middle	-	21.50	21.50		8.16	8.16		32.45	32.45		66.6	65.6		4.87	4.80		3.65	3.63		2	
11/4/2015	17:30	Rainy	Middle	-	20.90	20.90	20.90	8.17	8.17	8.16	31.50	31.50	31.53	67.2	68.7	68.3	5.00	5.12	5.08	2.64	2.62	2.62	6	5.00
	17:32		Middle	-	20.90	20.90		8.14	8.14		31.55	31.55		69.1	68.2		5.13	5.06		2.61	2.61		4	
13/4/2015	18:43	Fine	Middle	-	22.70	22.70	22.75	7.82	7.82	7.82	32.98	32.98	33.00	80.4	81.9	81.3	5.72	5.88	5.80	2.60	2.56	2.56	<2	<2
	18:44		Middle	-	22.80	22.80		7.82	7.82		32.99	33.04		81.2	81.7		5.77	5.81		2.58	2.51		<2	
15/4/2015	11:25	Fine	Middle	-	23.00	23.00	23.05	8.12	8.12	8.12	32.76	32.76	32.75	62.3	64.8	64.2	4.42	4.60	4.55	3.42	3.45	3.47	6	6.00
	11:27		Middle	-	23.10	23.10		8.11	8.11		32.74	32.74		64.9	64.6		4.60	4.58		3.48	3.51		6	
17/4/2015	10:10	Fine	Middle	-	23.60	23.60	23.65	8.09	8.09	8.09	32.64	32.64	32.64	68.9	69.5	69.0	4.83	4.88	4.85	4.29	4.29	4.29	2	3.00
	10:12		Middle	-	23.70	23.70		8.09	8.09		32.64	32.64		69.1	68.6		4.85	4.82		4.28	4.28		4	
20/4/2015	12:40	Cloudy	Middle	-	24.10	24.10	24.15	8.11	8.11	8.12	31.73	31.73	31.73	60.4	59.3	59.2	4.23	4.15	4.14	2.57	2.53	2.51	5	5.00
	12:42		Middle	-	24.20	24.20		8.12	8.12		31.73	31.73		58.6	58.3		4.10	4.08		2.54	2.41		5	
22/4/2015	15:40	Sunny	Middle	-	23.90	23.90	24.00	7.91	7.91	7.92	32.53	32.53	32.52	68.1	67.2	70.3	4.76	4.29	4.89	3.29	3.29	3.29	<2	2.00
	15:42		Middle	-	24.10	24.10		7.92	7.92		32.51	32.51		72.6	73.4		5.07	5.43		3.29	3.29		2	
24/4/2015	16:40	Fine	Middle	-	24.60	24.60	24.60	7.98	7.98	7.98	32.73	32.73	32.50	62.8	62.4	61.8	4.37	4.31	4.29	2.04	2.02	2.05	7	7.50
	16:41		Middle	-	24.60	24.60		7.97	7.97		32.27	32.27		61.5	60.6		4.27	4.21		2.05	2.09		8	
27/4/2015	18:00	Fine	Middle	-	24.70	24.70	24.70	8.13	8.13	8.12	32.11	32.11	32.11	88.8	89.0	88.3	6.14	6.16	6.11	1.36	1.82	1.53	5	4.00
	18:01		Middle	-	24.70	24.70		8.11	8.11		32.11	32.11		87.3	87.9		6.04	6.08		1.44	1.48		3	

Remarks:  
Single underline denotes exceedance over Action Level.  
Double underline denotes exceedance over Limit Level.



**Water Monitoring Result at C1 - HKCEC  
Mid-Ebb Tide**

Date	Time	Weather Condition	Sampling Depth		Water Temperature			pH			Salinity		DO Saturation		DO		Turbidity		Suspended Solids					
					°C			-			ppt		%		mg/L		NTU		mg/L					
					Value	Average		Value	Average		Value	Average	Value	Average	Value	Average	Value	Average	Value	Average				
30/3/2015	22:15	Cloudy	Middle	2.0	21.40	21.40	21.45	7.68	7.68	7.68	32.94	32.94	32.84	75.0	75.7	75.5	5.47	5.52	5.50	3.00	3.03	2.95	3	3.00
	22:16		Middle	2.0	21.50	21.50		7.68	7.68		32.73	32.73		75.7	75.6		5.51	5.51		2.90	2.87		3	
1/4/2015	10:54	Fine	Middle	2.5	22.00	22.00	22.15	8.11	8.11	8.10	32.27	32.27	32.30	70.3	73.1	71.7	5.07	5.18	5.15	5.66	5.66	5.66	3	3.00
	10:56		Middle	2.5	22.30	22.30		8.09	8.09		32.33	32.33		72.0	71.4		5.20	5.16		5.66	5.66		3	
3/4/2015	14:35	Sunny	Middle	2.0	23.40	23.40	23.45	7.65	7.65	7.66	31.89	31.89	31.88	80.7	80.9	81.2	5.70	5.71	5.73	3.30	3.28	3.18	5	4.50
	14:36		Middle	2.0	23.50	23.50		7.67	7.67		31.86	31.86		81.4	81.6		5.75	5.76		3.04	3.10		4	
7/4/2015	13:05	Cloudy	Middle	2.5	24.20	24.30	24.23	7.98	7.98	7.99	32.68	32.63	32.67	77.7	78.2	78.2	5.41	5.44	5.44	4.01	3.98	3.95	3	3.50
	13:06		Middle	2.5	24.20	24.20		7.99	7.99		32.68	32.68		78.3	78.4		5.45	5.45		3.93	3.87		4	
9/4/2015	14:38	Cloudy	Middle	2.5	21.30	21.30	21.35	8.24	8.24	8.24	32.90	32.90	32.90	56.2	57.3	57.4	4.12	4.20	4.20	4.28	4.29	4.30	4	4.00
	14:40		Middle	2.5	21.40	21.40		8.24	8.24		32.90	32.90		57.9	58.1		4.24	4.25		4.30	4.31		4	
11/4/2015	16:41	Rainy	Middle	2.5	20.80	20.80	20.80	8.20	8.20	8.20	32.73	32.73	32.74	61.7	61.4	60.5	4.55	4.53	4.46	1.79	1.79	1.75	3	3.00
	16:43		Middle	2.5	20.80	20.80		8.20	8.20		32.74	32.74		59.2	59.6		4.37	4.40		1.71	1.69		3	
13/4/2015	17:00	Fine	Middle	3.0	22.30	22.30	22.35	8.13	8.13	8.13	32.99	32.99	32.99	62.8	61.7	60.3	4.30	4.22	4.22	1.44	1.44	1.46	3	3.00
	17:02		Middle	3.0	22.40	22.40		8.13	8.13		32.98	32.98		58.2	58.3		4.17	4.17		1.47	1.50		3	
15/4/2015	10:41	Fine	Middle	2.5	22.30	22.30	22.35	8.18	8.18	8.18	32.94	32.94	32.94	56.7	55.9	57.0	4.07	4.01	4.09	2.15	2.15	2.12	5	4.50
	10:43		Middle	2.5	22.40	22.40		8.18	8.18		32.94	32.94		55.8	59.4		4.00	4.26		2.14	2.02		4	
17/4/2015	11:52	Fine	Middle	2.5	23.30	23.30	23.35	8.15	8.15	8.15	32.79	32.79	32.79	60.1	59.3	58.8	4.24	4.19	4.15	2.26	2.28	2.21	5	4.50
	11:54		Middle	2.5	23.40	23.40		8.15	8.15		32.78	32.78		58.8	57.0		4.15	4.02		2.16	2.15		4	
20/4/2015	14:45	Cloudy	Middle	2.5	25.70	25.70	25.40	8.19	8.19	8.19	31.50	31.50	31.50	70.4	73.4	72.1	4.79	4.99	4.90	4.93	4.84	4.86	8	8.50
	14:47		Middle	2.5	25.10	25.10		8.19	8.19		31.49	31.49		71.8	72.6		4.88	4.93		4.83	4.82		9	
22/4/2015	14:49	Sunny	Middle	2.5	23.80	23.80	23.80	7.98	7.98	7.99	32.57	32.57	32.57	64.5	63.3	63.2	4.52	4.43	4.43	3.17	3.09	3.07	4	4.50
	14:51		Middle	2.5	23.80	23.80		7.99	7.99		32.57	32.57		62.8	62.1		4.40	4.36		3.01	3.01		5	
24/4/2015	16:02	Fine	Middle	2.5	24.20	24.20	24.20	8.01	8.01	8.01	32.41	32.41	32.51	67.0	64.3	64.0	4.66	4.46	4.45	1.78	1.74	1.77	4	3.50
	16:04		Middle	2.5	24.20	24.20		8.01	8.01		32.61	32.61		63.0	61.7		4.38	4.28		1.76	1.78		3	
27/4/2015	17:05	Fine	Middle	3.0	25.40	25.40	25.40	7.99	7.99	7.99	32.79	32.79	32.79	81.6	82.4	82.0	5.56	5.59	5.58	1.52	1.52	1.59	3	3.50
	17:07		Middle	3.0	25.40	25.40		7.99	7.99		32.79	32.79		81.7	82.3		5.56	5.60		1.61	1.69		4	

Remarks:  
Single underline denotes exceedance over Action Level.  
Double underline denotes exceedance over Limit Level.



**Water Monitoring Result at P1 - HKCEC Phase I  
Mid-Ebb Tide**

Date	Time	Weather Condition	Sampling Depth		Water Temperature			pH			Salinity		DO Saturation		DO		Turbidity		Suspended Solids					
					°C			-			ppt		%		mg/L		NTU		mg/L					
					Value	Average		Value	Average		Value	Average	Value	Average	Value	Average	Value	Average	Value	Average				
30/3/2015	21:40	Cloudy	Middle	2.0	21.50	21.50	21.50	7.58	7.58	7.59	32.64	32.64	32.60	74.9	75.8	74.9	5.46	5.53	5.46	4.34	4.08	4.28	3	3.50
	21:41		Middle	2.0	21.50	21.50		7.59	7.59		32.55	32.56		74.5	74.4		5.42	5.42		4.41	4.30		4	
1/4/2015	11:12	Fine	Middle	2.5	22.00	22.00	21.75	8.13	8.13	8.13	32.34	32.34	32.35	73.7	74.0	73.7	5.39	5.41	5.39	1.44	1.41	1.39	3	4.00
	11:14		Middle	2.5	21.50	21.50		8.13	8.13		32.36	32.36		73.8	73.3		5.40	5.36		1.36	1.36		5	
3/4/2015	14:17	Sunny	Middle	2.0	24.50	24.50	24.50	7.78	7.78	7.79	32.12	32.12	32.12	82.0	82.6	81.6	5.70	5.75	5.69	1.96	1.98	1.84	3	3.00
	14:18		Middle	2.0	24.50	24.50		7.79	7.79		32.12	32.12		81.9	80.0		5.71	5.59		1.72	1.69		3	
7/4/2015	12:38	Cloudy	Middle	2.5	24.80	24.80	24.80	7.99	7.99	7.99	32.33	32.33	32.44	78.4	78.4	78.7	5.72	5.72	5.58	4.90	4.98	4.90	4	4.50
	12:39		Middle	2.5	24.80	24.80		7.99	7.99		32.55	32.55		78.7	79.3		5.42	5.47		5.00	4.71		5	
9/4/2015	14:26	Cloudy	Middle	2.5	20.90	20.90	20.90	8.19	8.19	8.21	32.86	32.86	32.87	63.0	65.4	64.8	4.64	4.82	4.78	4.32	4.31	4.33	4	4.50
	14:28		Middle	2.5	20.90	20.90		8.23	8.23		32.88	32.88		65.6	65.3		4.84	4.82		4.34	4.35		5	
11/4/2015	16:28	Rainy	Middle	2.5	20.40	20.40	20.35	8.22	8.22	8.22	32.52	32.52	32.50	59.3	58.5	57.9	4.42	4.36	4.32	4.43	4.53	4.49	4	4.50
	16:30		Middle	2.5	20.30	20.30		8.22	8.22		32.47	32.47		57.1	56.5		4.26	4.22		4.51	4.47		5	
13/4/2015	16:34	Fine	Middle	3.0	23.70	23.70	23.85	8.14	8.14	8.14	33.09	33.09	33.07	62.8	61.5	61.3	4.38	4.29	4.28	2.78	2.79	2.79	3	3.50
	16:36		Middle	3.0	24.00	24.00		8.13	8.13		33.05	33.05		60.7	60.2		4.23	4.20		2.79	2.78		4	
15/4/2015	10:29	Fine	Middle	2.5	22.60	22.60	22.70	8.16	8.16	8.17	32.98	32.98	32.96	61.7	61.6	60.0	4.40	4.39	4.28	2.40	2.43	2.44	6	5.50
	10:31		Middle	2.5	22.80	22.80		8.18	8.18		32.93	32.93		58.6	58.2		4.18	4.15		2.45	2.48		5	
17/4/2015	11:40	Fine	Middle	2.5	24.20	24.20	24.25	8.15	8.15	8.16	32.69	32.69	32.69	57.8	57.1	56.3	4.02	3.97	3.92	2.55	2.56	2.55	4	4.50
	11:42		Middle	2.5	24.30	24.30		8.16	8.16		32.69	32.69		55.7	54.6		3.87	3.80		2.55	2.54		5	
20/4/2015	15:05	Cloudy	Middle	2.5	24.40	24.40	24.55	8.20	8.20	8.20	31.42	31.42	31.42	69.6	65.3	68.8	4.84	4.55	4.78	4.22	4.23	4.29	10	9.00
	15:07		Middle	2.5	24.70	24.70		8.20	8.20		31.42	31.42		70.1	70.2		4.87	4.87		4.32	4.39		8	
22/4/2015	14:37	Sunny	Middle	2.5	24.40	24.40	24.55	7.94	7.94	7.95	32.76	32.76	32.70	69.3	68.3	67.7	4.79	4.73	4.68	1.98	1.95	1.94	4	4.00
	14:39		Middle	2.5	24.70	24.70		7.95	7.95		32.64	32.64		67.0	66.2		4.63	4.57		1.92	1.91		4	
24/4/2015	15:45	Fine	Middle	2.5	24.90	24.90	25.00	7.94	7.94	7.96	32.66	32.66	32.68	68.0	67.0	67.5	4.66	4.59	4.59	1.79	1.79	1.78	4	4.50
	15:47		Middle	2.5	25.10	25.10		7.97	7.97		32.70	32.70		67.0	67.9		4.59	4.52		1.78	1.75		5	
27/4/2015	16:35	Fine	Middle	3.0	27.60	27.60	27.60	7.95	7.95	7.96	33.08	33.08	33.08	84.9	86.2	85.6	5.57	5.65	5.61	1.31	1.46	1.40	3	3.00
	16:37		Middle	3.0	27.60	27.60		7.96	7.96		33.08	33.08		86.3	84.8		5.66	5.56		1.46	1.38		3	

Remarks:  
Single underline denotes exceedance over Action Level.  
Double underline denotes exceedance over Limit Level.



**Water Monitoring Result at P3 - APA  
Mid-Ebb Tide**

Date	Time	Weather Condition	Sampling Depth		Water Temperature			pH			Salinity		DO Saturation		DO		Turbidity		Suspended Solids					
					°C			-			ppt		%		mg/L		NTU		mg/L					
					Value	Average		Value	Average		Value	Average	Value	Average	Value	Average	Value	Average	Value	Average				
30/3/2015	21:47	Cloudy	Middle	2.0	21.30	21.30	21.35	7.74	7.74	7.74	32.68	32.68	32.82	73.5	72.5	73.2	5.34	5.29	5.34	3.85	3.90	3.69	3	2.50
	21:48		Middle	2.0	21.40	21.40		7.74	7.74		32.95	32.95		73.3	73.5		5.35	5.36		3.51	3.48		2	
1/4/2015	11:08	Fine	Middle	2.5	22.40	22.40	21.95	8.14	8.14	8.14	32.11	32.11	32.20	74.1	73.9	74.3	5.43	5.41	5.44	1.44	1.42	1.41	3	3.00
	11:10		Middle	2.5	21.50	21.50		8.14	8.14		32.28	32.28		74.3	74.7		5.44	5.47		1.41	1.38		3	
3/4/2015	14:21	Sunny	Middle	2.0	24.20	24.20	24.20	7.84	7.84	7.85	31.92	31.92	31.95	78.8	80.4	80.4	5.49	5.62	5.61	2.09	2.19	2.18	3	2.50
	14:22		Middle	2.0	24.20	24.20		7.85	7.85		31.98	31.98		81.2	81.0		5.67	5.65		2.15	2.28		2	
7/4/2015	12:43	Cloudy	Middle	2.5	24.40	24.40	24.40	8.01	8.01	8.01	32.62	32.62	32.39	84.7	84.0	83.6	5.88	5.82	5.80	4.55	4.53	4.48	5	5.50
	12:44		Middle	2.5	24.40	24.40		8.01	8.01		32.16	32.16		83.1	82.5		5.77	5.72		4.41	4.44		6	
9/4/2015	14:29	Cloudy	Middle	2.5	20.90	20.90	20.90	8.24	8.24	8.24	32.82	32.82	32.84	68.1	67.0	67.6	5.02	4.94	4.99	4.15	4.02	3.95	3	3.50
	14:31		Middle	2.5	20.90	20.90		8.24	8.24		32.85	32.85		67.8	67.6		5.00	4.99		3.83	3.80		4	
11/4/2015	16:31	Rainy	Middle	2.5	20.60	20.60	20.60	8.22	8.22	8.22	32.59	32.59	32.59	60.7	60.1	60.0	4.51	4.46	4.45	3.63	3.64	3.64	3	3.50
	16:33		Middle	2.5	20.60	20.60		8.22	8.22		32.58	32.58		59.8	59.3		4.44	4.40		3.66	3.64		4	
13/4/2015	16:40	Fine	Middle	3.0	22.80	22.80	22.80	8.13	8.13	8.13	32.99	32.99	32.98	64.5	64.1	63.8	4.58	4.56	4.53	2.73	2.82	2.79	4	5.00
	16:42		Middle	3.0	22.80	22.80		8.12	8.12		32.97	32.97		63.3	63.4		4.49	4.50		2.86	2.76		6	
15/4/2015	10:32	Fine	Middle	2.5	22.30	22.30	22.35	8.17	8.17	8.17	33.00	33.00	32.98	60.2	61.9	61.0	4.32	4.37	4.37	2.26	2.26	2.26	5	4.50
	10:34		Middle	2.5	22.40	22.40		8.17	8.17		32.95	32.95		59.1	62.7		4.24	4.54		2.26	2.26		4	
17/4/2015	11:43	Fine	Middle	2.5	24.30	24.30	24.35	8.15	8.15	8.15	32.68	32.68	32.69	56.3	54.2	54.2	3.91	3.76	3.76	1.76	1.76	1.76	5	5.50
	11:45		Middle	2.5	24.40	24.40		8.15	8.15		32.70	32.70		53.2	53.2		3.69	3.69		1.76	1.76		6	
20/4/2015	15:00	Cloudy	Middle	2.5	24.40	24.40	24.50	8.21	8.21	8.21	31.37	31.37	31.37	70.4	70.9	69.9	4.91	4.94	4.87	1.87	1.79	1.88	6	5.50
	15:02		Middle	2.5	24.60	24.60		8.21	8.21		31.37	31.37		70.2	68.0		4.90	4.74		1.87	1.97		5	
22/4/2015	14:41	Sunny	Middle	2.5	23.90	23.90	24.00	7.95	7.95	7.96	32.50	32.50	32.51	65.3	64.7	64.3	4.58	4.53	4.50	1.63	1.80	1.75	4	4.00
	14:42		Middle	2.5	24.10	24.10		7.96	7.96		32.52	32.52		63.8	63.2		4.47	4.41		1.87	1.69		4	
24/4/2015	15:48	Fine	Middle	2.5	24.30	24.30	24.40	7.98	7.98	7.99	32.56	32.56	32.63	59.4	62.5	63.2	4.12	4.33	4.35	1.96	1.98	1.98	5	5.00
	15:50		Middle	2.5	24.50	24.50		7.99	7.99		32.69	32.69		66.5	64.2		4.51	4.45		1.99	2.00		5	
27/4/2015	16:41	Fine	Middle	3.0	25.80	25.80	25.80	7.98	7.98	7.98	32.65	32.65	32.65	82.5	82.7	82.9	5.58	5.58	5.60	1.81	1.79	1.77	3	3.00
	16:42		Middle	3.0	25.80	25.80		7.98	7.98		32.65	32.65		84.4	82.1		5.70	5.54		1.74	1.74		3	

Remarks:  
Single underline denotes exceedance over Action Level.  
Double underline denotes exceedance over Limit Level.



**Water Monitoring Result at P4 - SOC  
Mid-Ebb Tide**

Date	Time	Weather Condition	Sampling Depth		Water Temperature			pH			Salinity			DO Saturation			DO			Turbidity			Suspended Solids	
					°C		-		ppt		%		mg/L		NTU		mg/L							
					Value	Average	Value	Average	Value	Average	Value	Average	Value	Average	Value	Average	Value	Average	Value	Average	Value	Average		
30/3/2015	21:59	Cloudy	Middle	2.0	21.40	21.40	21.40	7.71	7.71	7.72	32.95	32.95	32.95	81.8	82.6	82.4	5.96	6.03	6.01	3.55	3.53	3.55	3	3.00
	22:00		Middle	2.0	21.40	21.40		7.72	7.72		32.95	32.95		82.7	82.5		6.03	6.01		3.50	3.60		3	
1/4/2015	11:01	Fine	Middle	2.5	21.60	21.60	21.60	8.12	8.12	8.12	32.39	32.39	32.35	77.2	79.0	77.9	5.63	5.76	5.69	1.51	1.48	1.48	3	3.00
	11:03		Middle	2.5	21.60	21.60		8.12	8.12		32.31	32.31		77.6	77.9		5.68	5.69		1.48	1.45		3	
3/4/2015	14:27	Sunny	Middle	2.0	24.60	24.60	24.60	7.88	7.88	7.89	32.14	32.14	32.13	81.3	83.4	81.9	5.65	5.79	5.68	2.82	2.84	2.61	3	3.00
	14:28		Middle	2.0	24.60	24.60		7.89	7.89		32.12	32.12		81.5	81.2		5.65	5.62		2.47	2.29		3	
7/4/2015	12:49	Cloudy	Middle	2.5	24.30	24.30	24.30	7.97	7.97	7.97	32.55	32.55	32.58	81.3	81.0	81.4	5.66	5.64	5.67	3.64	3.66	3.54	4	4.00
	12:50		Middle	2.5	24.30	24.30		7.97	7.97		32.61	32.61		81.5	81.7		5.67	5.69		3.55	3.30		4	
9/4/2015	14:32	Cloudy	Middle	2.5	21.10	21.10	21.10	8.24	8.24	8.25	32.86	32.86	32.87	64.4	63.4	62.9	4.72	4.65	4.61	4.86	4.83	4.79	5	4.50
	14:34		Middle	2.5	21.10	21.10		8.25	8.25		32.88	32.88		62.7	61.0		4.58	4.47		4.76	4.72		4	
11/4/2015	16:34	Rainy	Middle	2.5	20.60	20.60	20.60	8.22	8.22	8.22	32.77	32.77	32.77	60.0	59.1	58.7	4.45	4.39	4.35	3.21	3.26	3.28	4	4.00
	16:36		Middle	2.5	20.60	20.60		8.22	8.22		32.76	32.76		58.2	57.3		4.32	4.25		3.32	3.32		4	
13/4/2015	16:48	Fine	Middle	3.0	22.50	22.50	22.55	8.12	8.12	8.12	33.05	33.05	33.04	63.5	63.0	63.0	4.54	4.51	4.51	3.73	3.63	3.57	4	4.50
	16:50		Middle	3.0	22.60	22.60		8.12	8.12		33.03	33.03		62.8	62.6		4.49	4.48		3.54	3.39		5	
15/4/2015	10:35	Fine	Middle	2.5	22.20	22.20	22.25	8.16	8.16	8.14	32.49	32.49	32.59	61.3	62.3	61.9	4.41	4.48	4.45	4.20	4.32	4.30	6	6.00
	10:37		Middle	2.5	22.30	22.30		8.11	8.11		32.68	32.68		62.4	61.7		4.46	4.43		4.33	4.35		6	
17/4/2015	11:46	Fine	Middle	2.5	23.60	23.60	23.65	8.15	8.15	8.15	32.84	32.84	32.83	60.8	59.1	59.1	4.27	4.25	4.17	2.36	2.35	2.34	6	5.50
	11:48		Middle	2.5	23.70	23.70		8.15	8.15		32.82	32.82		58.5	57.8		4.10	4.06		2.33	2.31		5	
20/4/2015	14:55	Cloudy	Middle	2.5	24.70	24.70	24.70	8.20	8.20	8.20	31.42	31.42	31.43	70.6	72.3	71.9	4.90	5.01	4.99	2.45	2.31	2.36	4	4.00
	14:57		Middle	2.5	24.70	24.70		8.20	8.20		31.43	31.43		71.9	72.9		4.99	5.06		2.31	2.36		4	
22/4/2015	14:43	Sunny	Middle	2.5	23.60	23.60	23.75	7.96	7.96	7.97	32.59	32.59	32.58	67.3	66.5	65.9	4.71	4.65	4.61	1.87	1.88	1.90	4	3.50
	14:45		Middle	2.5	23.90	23.90		7.97	7.97		32.57	32.57		65.5	64.1		4.59	4.49		1.90	1.93		3	
24/4/2015	15:52	Fine	Middle	2.5	24.20	24.20	24.35	8.00	8.00	8.00	32.56	32.56	32.57	66.5	65.3	64.8	4.64	4.58	4.53	1.25	1.20	1.21	4	4.50
	15:54		Middle	2.5	24.50	24.50		7.99	7.99		32.58	32.58		64.2	63.0		4.53	4.38		1.19	1.20		5	
27/4/2015	16:53	Fine	Middle	3.0	25.50	25.50	25.55	7.99	7.99	7.99	32.32	32.32	32.56	81.5	81.2	80.8	5.52	5.51	5.48	1.93	1.81	1.71	3	3.50
	16:55		Middle	3.0	25.60	25.60		7.99	7.99		32.80	32.80		80.4	80.1		5.46	5.44		1.55	1.53		4	

Remarks:  
Single underline denotes exceedance over Action Level.  
Double underline denotes exceedance over Limit Level.



**Water Monitoring Result at P5 - WCT / RT / IT  
Mid-Ebb Tide**

Date	Time	Weather Condition	Sampling Depth		Water Temperature			pH			Salinity		DO Saturation		DO		Turbidity		Suspended Solids					
					°C			-			ppt		%		mg/L		NTU		mg/L					
					Value	Average		Value	Average		Value	Average	Value	Average	Value	Average	Value	Average	Value	Average				
30/3/2015	22:09	Cloudy	Middle	2.0	21.50	21.50	21.50	7.78	7.78	7.78	32.95	32.95	32.96	72.1	72.7	72.2	5.23	5.29	5.25	2.99	3.02	3.00	3	3.00
	22:10		Middle	2.0	21.50	21.50		7.77	7.77		32.96	32.96		72.6	71.4		5.28	5.20		3.04	2.94		3	
1/4/2015	10:57	Fine	Middle	2.5	21.60	21.60	21.65	8.11	8.11	8.11	32.30	32.30	32.30	74.6	74.1	73.7	5.44	5.41	5.38	5.65	5.65	5.65	3	3.50
	10:59		Middle	2.5	21.70	21.70		8.11	8.11		32.30	32.30		73.5	72.5		5.36	5.29		5.65	5.65		4	
3/4/2015	14:31	Sunny	Middle	2.0	24.00	24.00	24.00	7.92	7.92	7.92	32.17	32.17	32.17	80.9	81.1	80.7	5.73	5.74	5.69	3.20	3.10	3.13	3	2.50
	14:32		Middle	2.0	24.00	24.00		7.92	7.92		32.17	32.17		80.6	80.0		5.64	5.64		3.14	3.08		2	
7/4/2015	12:58	Cloudy	Middle	2.5	23.90	23.90	23.90	8.02	8.02	8.02	32.63	32.63	32.63	79.3	79.8	79.2	5.55	5.58	5.54	3.82	3.86	3.82	4	4.00
	12:59		Middle	2.5	23.90	23.90		8.02	8.02		32.63	32.63		79.0	78.7		5.52	5.50		3.81	3.79		4	
9/4/2015	14:35	Cloudy	Middle	2.5	21.20	21.20	21.20	8.25	8.25	8.25	32.88	32.88	32.89	57.8	57.5	57.9	4.24	4.21	4.23	5.21	5.21	5.24	4	4.00
	14:37		Middle	2.5	21.20	21.20		8.25	8.25		32.89	32.89		58.3	57.8		4.27	4.21		5.23	5.29		4	
11/4/2015	16:37	Rainy	Middle	2.5	20.80	20.80	20.80	8.20	8.20	8.20	32.75	32.75	32.76	54.7	55.5	55.0	4.04	4.10	4.07	1.81	1.82	1.80	2	2.50
	16:39		Middle	2.5	20.80	20.80		8.20	8.20		32.76	32.76		55.1	54.8		4.07	4.05		1.79	1.78		3	
13/4/2015	16:54	Fine	Middle	3.0	22.60	22.60	22.65	8.12	8.12	8.12	32.85	32.85	32.85	60.9	61.2	60.9	4.35	4.37	4.35	2.59	2.58	2.65	4	4.00
	16:56		Middle	3.0	22.70	22.70		8.12	8.12		32.84	32.84		61.1	60.3		4.36	4.31		2.70	2.71		4	
15/4/2015	10:38	Fine	Middle	2.5	22.30	22.30	22.35	8.15	8.15	8.16	32.94	32.94	32.94	58.9	59.1	58.2	4.23	4.24	4.18	3.17	3.17	3.17	6	6.50
	10:40		Middle	2.5	22.40	22.40		8.16	8.16		32.94	32.94		58.0	56.8		4.16	4.08		3.17	3.18		7	
17/4/2015	11:49	Fine	Middle	2.5	23.30	23.30	23.35	8.16	8.16	8.16	32.82	32.82	32.82	58.4	57.3	56.3	4.12	4.05	3.97	2.52	2.32	2.35	6	6.00
	11:51		Middle	2.5	23.40	23.40		8.16	8.16		32.82	32.82		55.5	54.0		3.91	3.81		2.30	2.27		6	
20/4/2015	14:50	Cloudy	Middle	2.5	24.90	24.90	25.05	8.20	8.20	8.20	31.45	31.45	31.45	70.2	71.1	70.6	4.85	4.93	4.88	4.82	4.82	4.73	9	9.00
	14:52		Middle	2.5	25.20	25.20		8.20	8.20		31.45	31.45		70.9	70.2		4.89	4.84		4.70	4.57		9	
22/4/2015	14:46	Sunny	Middle	2.5	23.60	23.60	23.60	7.98	7.98	7.98	32.57	32.57	32.58	67.3	66.0	65.5	4.72	4.63	4.59	2.14	2.14	2.10	5	5.50
	14:47		Middle	2.5	23.60	23.60		7.98	7.98		32.58	32.58		64.8	63.8		4.54	4.47		2.12	2.01		6	
24/4/2015	15:56	Fine	Middle	2.5	24.30	24.30	24.30	8.00	8.00	8.01	32.63	32.63	32.64	65.6	64.2	63.6	4.56	4.48	4.43	2.26	2.26	2.27	3	3.00
	15:58		Middle	2.5	24.30	24.30		8.01	8.01		32.65	32.65		63.0	61.7		4.38	4.30		2.26	2.29		3	
27/4/2015	17:00	Fine	Middle	3.0	25.40	25.40	25.45	7.99	7.99	7.99	32.79	32.79	32.79	82.1	83.0	82.3	5.59	5.65	5.61	1.74	1.72	1.73	4	4.00
	17:02		Middle	3.0	25.50	25.50		7.99	7.99		32.79	32.79		82.1	82.1		5.59	5.59		1.72	1.73		4	

Remarks:  
Single underline denotes exceedance over Action Level.  
Double underline denotes exceedance over Limit Level.



**Water Monitoring Result at RW21-P789 - Sun Hung Kai Centre  
Mid-Ebb Tide**

Date	Time	Weather Condition	Sampling Depth		Water Temperature			pH			Salinity		DO Saturation		DO		Turbidity		Suspended Solids					
					°C			-			ppt		%		mg/L		NTU		mg/L					
					Value	Average		Value	Average		Value	Average	Value	Average	Value	Average	Value	Average	Value	Average				
30/3/2015	20:30	Cloudy	Middle	3.0	22.00	22.00	22.00	7.72	7.72	7.72	32.84	32.84	32.84	74.2	74.9	74.3	5.35	5.41	5.36	3.65	3.62	3.57	4	4.00
	20:31		Middle	3.0	22.00	22.00		7.72	7.72		32.83	32.83		74.2	73.9		5.35	5.34		3.48	3.52		4	
1/4/2015	9:20	Fine	Middle	3.0	21.70	21.70	21.80	8.08	8.08	8.08	32.73	32.73	32.74	67.3	67.3	67.4	4.89	4.88	4.89	2.51	2.39	2.42	4	3.50
	9:22		Middle	3.0	21.90	21.90		8.08	8.08		32.74	32.74		68.0	66.8		4.93	4.84		2.38	2.38		3	
3/4/2015	13:15	Sunny	Middle	3.5	24.30	24.30	24.30	7.81	7.81	7.81	32.59	32.59	32.59	72.4	72.1	72.9	5.03	5.00	5.06	4.71	4.28	4.27	6	5.50
	13:16		Middle	3.5	24.30	24.30		7.81	7.81		32.59	32.59		74.0	73.0		5.13	5.06		4.08	4.02		5	
7/4/2015	13:20	Cloudy	Middle	3.5	23.60	23.60	23.60	7.95	7.95	7.95	32.60	32.60	32.61	76.7	77.2	77.0	5.39	5.42	5.41	3.53	3.56	3.57	4	3.50
	13:21		Middle	3.5	23.60	23.60		7.95	7.95		32.62	32.62		77.0	76.9		5.42	5.40		3.58	3.60		3	
9/4/2015	14:45	Cloudy	Middle	2.5	21.50	21.50	21.50	8.24	8.24	8.24	32.94	32.94	32.96	61.8	62.5	61.7	4.50	4.55	4.49	5.73	5.99	5.96	8	8.00
	14:47		Middle	2.5	21.50	21.50		8.24	8.24		32.97	32.97		61.6	60.7		4.49	4.43		6.12	5.98		8	
11/4/2015	16:49	Rainy	Middle	3.0	21.00	21.00	20.95	8.22	8.22	8.22	32.66	32.66	32.70	57.8	57.5	56.5	4.26	4.24	4.17	3.49	3.51	3.51	4	4.00
	16:51		Middle	3.0	20.90	20.90		8.22	8.22		32.73	32.73		56.0	54.7		4.13	4.03		3.53	3.52		4	
13/4/2015	19:14	Fine	Middle	3.0	21.90	21.90	21.90	7.87	7.87	7.88	33.51	33.51	33.30	71.4	72.2	71.8	5.15	5.21	5.18	3.48	3.62	3.50	3	3.00
	19:15		Middle	3.0	21.90	21.90		7.88	7.88		33.09	33.09		72.0	71.4		5.19	5.15		3.45	3.43		3	
15/4/2015	10:52	Fine	Middle	3.5	22.30	22.30	22.30	8.16	8.16	8.16	33.02	33.02	33.01	62.0	62.7	62.9	4.45	4.50	4.52	3.53	3.50	3.50	5	5.50
	10:54		Middle	3.5	22.30	22.30		8.16	8.16		33.00	33.00		63.6	63.4		4.56	4.56		3.49	3.49		6	
17/4/2015	9:40	Fine	Middle	3.0	22.80	22.80	22.85	8.14	8.14	8.14	33.08	33.08	33.08	65.1	64.9	64.9	4.63	4.62	4.61	2.86	2.87	2.87	4	4.50
	9:42		Middle	3.0	22.90	22.90		8.14	8.14		33.08	33.08		64.6	64.8		4.59	4.58		2.87	2.87		5	
20/4/2015	12:15	Cloudy	Middle	3.0	24.30	24.30	24.35	8.18	8.18	8.18	32.06	32.06	32.07	64.8	64.3	64.1	4.51	4.47	4.46	2.99	2.98	2.93	4	4.50
	12:17		Middle	3.0	24.40	24.40		8.18	8.18		32.07	32.07		63.1	64.2		4.37	4.47		2.87	2.87		5	
22/4/2015	15:08	Sunny	Middle	3.0	23.90	23.90	24.00	8.00	8.00	8.00	32.83	32.83	32.85	70.8	69.1	68.7	4.95	4.87	4.81	1.26	1.24	1.24	2	2.50
	15:10		Middle	3.0	24.10	24.10		8.00	8.00		32.87	32.87		67.9	66.8		4.75	4.65		1.24	1.23		3	
24/4/2015	16:18	Fine	Middle	3.0	24.10	24.10	24.15	7.99	7.99	8.00	32.71	32.71	32.84	73.3	72.5	70.7	5.09	5.03	4.91	2.27	2.27	2.28	4	4.50
	16:20		Middle	3.0	24.20	24.20		8.00	8.00		32.97	32.97		70.0	67.0		4.84	4.66		2.28	2.30		5	
27/4/2015	18:45	Fine	Middle	3.0	24.20	24.20	24.25	8.15	8.15	8.15	32.24	32.24	32.24	84.3	84.8	83.7	5.87	5.90	5.83	1.67	1.59	1.52	3	3.00
	18:46		Middle	3.0	24.30	24.30		8.15	8.15		32.23	32.23		82.9	82.8		5.77	5.76		1.34	1.46		3	

Remarks:  
Single underline denotes exceedance over Action Level.  
Double underline denotes exceedance over Limit Level.



**Water Monitoring Result at WSD19 - Sheung Wan  
Mid-Ebb Tide**

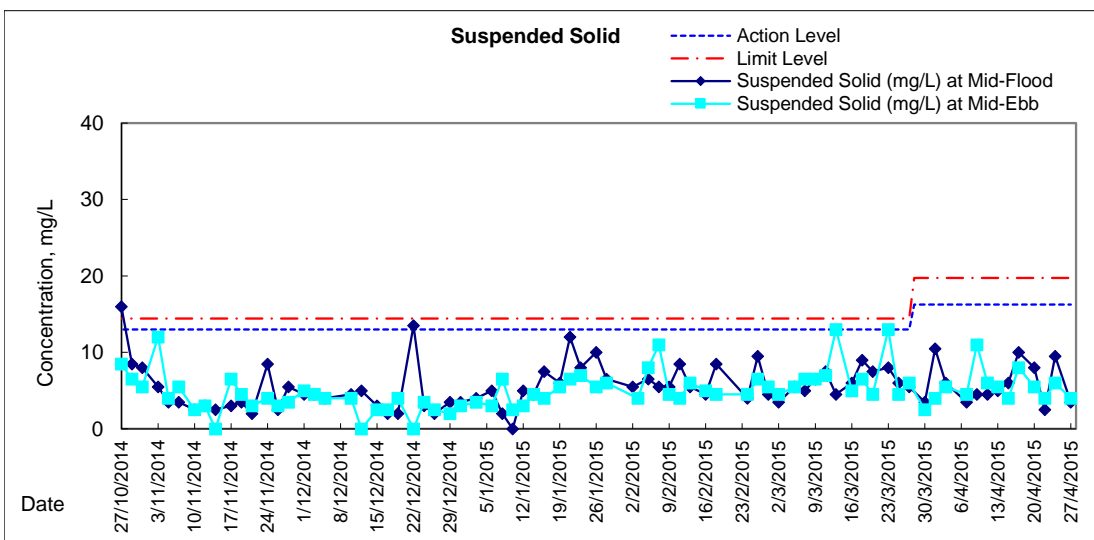
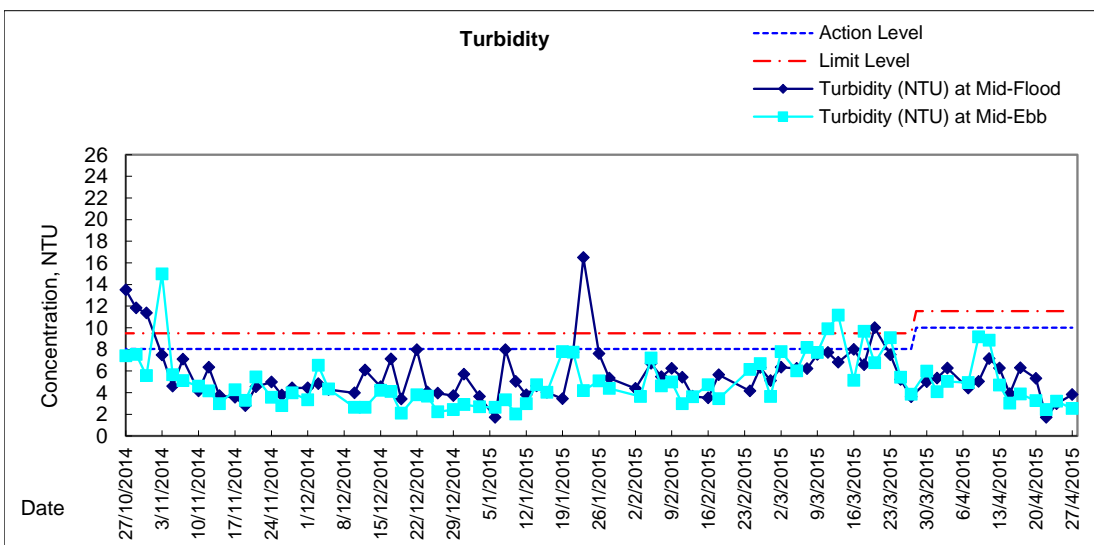
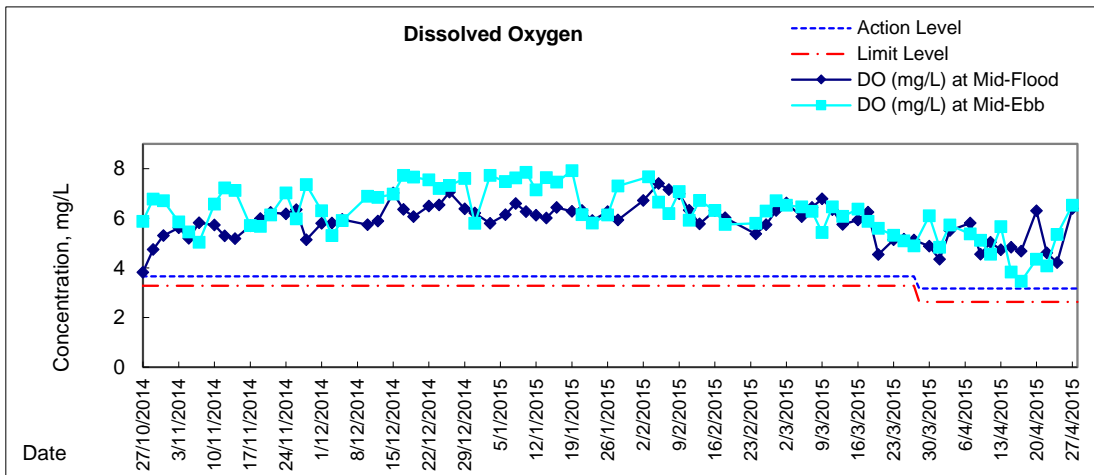
Date	Time	Weather Condition	Sampling Depth		Water Temperature		pH			Salinity		DO Saturation		DO		Turbidity		Suspended Solids						
					°C		-		ppt		%		mg/L		NTU		mg/L							
					Value	Average	Value	Average	Value	Average	Value	Average	Value	Average	Value	Average	Value	Average	Value	Average				
30/3/2015	19:24	Cloudy	Middle	3.0	22.20	22.20	22.25	7.65	7.65	7.65	32.50	32.50	32.60	86.1	86.2	85.0	6.18	6.19	6.10	6.06	5.93	5.99	3	2.50
	19:25		Middle	3.0	22.30	22.30		7.65	7.65		32.70	32.70		83.3	84.5		5.98	6.06		6.00	5.98		2	
1/4/2015	10:42	Fine	Middle	3.0	22.40	22.40	22.55	8.09	8.09	8.09	32.32	32.32	32.32	67.2	67.9	67.3	4.82	4.87	4.83	4.22	4.07	4.09	4	4.00
	10:44		Middle	3.0	22.70	22.70		8.09	8.09		32.31	32.31		67.6	66.6		4.85	4.77		4.05	4.03		4	
3/4/2015	11:01	Sunny	Middle	3.0	25.30	25.30	25.30	7.77	7.77	7.77	32.39	32.39	32.39	82.6	85.5	83.9	5.65	5.84	5.73	5.09	5.05	5.04	5	5.50
	11:02		Middle	3.0	25.30	25.30		7.77	7.77		32.39	32.39		84.7	82.6		5.79	5.65		5.03	5.00		6	
7/4/2015	14:30	Cloudy	Middle	2.5	24.50	24.50	24.50	8.04	8.04	8.04	31.37	31.37	31.32	75.4	75.5	75.0	5.43	5.39	5.37	5.03	5.01	4.93	4	4.50
	14:31		Middle	2.5	24.50	24.50		8.04	8.04		31.26	31.26		76.3	72.6		5.48	5.18		4.89	4.79		5	
9/4/2015	15:45	Cloudy	Middle	3.0	21.50	21.50	21.45	8.29	8.29	8.30	32.74	32.74	32.75	69.7	70.1	70.2	5.08	5.11	5.12	9.17	9.10	9.14	12	11.00
	15:47		Middle	3.0	21.40	21.40		8.30	8.30		32.75	32.75		70.5	70.3		5.14	5.13		9.13	9.16		10	
11/4/2015	15:35	Rainy	Middle	3.0	20.90	20.90	20.75	8.20	8.20	8.21	32.14	32.14	32.23	60.2	61.4	61.1	4.50	4.56	4.55	8.85	8.88	8.85	6	6.00
	15:37		Middle	3.0	20.60	20.60		8.21	8.21		32.31	32.31		60.9	61.7		4.54	4.58		8.85	8.80		6	
13/4/2015	20:50	Fine	Middle	2.0	21.80	21.80	21.80	7.80	7.80	7.80	32.41	32.41	32.26	74.9	75.2	74.9	5.88	5.85	5.66	4.78	4.73	4.70	6	5.50
	20:51		Middle	2.0	21.80	21.80		7.80	7.80		32.11	32.11		73.8	75.7		5.44	5.48		4.66	4.61		5	
15/4/2015	9:35	Fine	Middle	3.5	21.70	21.70	21.75	8.20	8.20	8.22	33.02	33.02	33.05	54.2	53.1	52.8	3.95	3.85	3.84	3.03	3.03	3.02	4	4.00
	9:37		Middle	3.5	21.80	21.80		8.23	8.23		33.08	33.06		52.4	51.6		3.80	3.74		3.02	3.00		4	
17/4/2015	10:45	Fine	Middle	3.0	23.40	23.40	23.50	8.19	8.19	8.20	32.72	32.72	32.67	57.9	55.4	55.0	3.85	2.66	3.46	4.07	3.90	3.87	9	8.00
	10:47		Middle	3.0	23.60	23.60		8.20	8.20		32.61	32.61		54.3	52.4		3.64	3.69		3.82	3.69		7	
20/4/2015	11:30	Cloudy	Middle	2.5	24.60	24.60	24.70	8.15	8.15	8.15	31.79	31.79	31.78	63.5	63.4	62.7	4.40	4.39	4.34	3.39	3.34	3.26	5	5.50
	11:32		Middle	2.5	24.80	24.80		8.15	8.15		31.77	31.77		62.2	61.8		4.31	4.27		3.23	3.07		6	
22/4/2015	13:51	Sunny	Middle	3.5	24.50	24.50	24.70	7.97	7.97	7.93	32.71	32.71	32.66	60.1	59.5	59.2	4.14	4.10	4.08	2.36	2.44	2.43	4	4.00
	13:53		Middle	3.5	24.90	24.90		7.89	7.89		32.60	32.60		58.8	58.2		4.05	4.01		2.45	2.46		4	
24/4/2015	15:10	Fine	Middle	3.0	25.30	25.30	25.45	7.91	7.91	7.93	32.72	32.72	32.71	78.8	79.0	78.7	5.36	5.37	5.35	3.18	3.17	3.19	6	6.00
	15:12		Middle	3.0	25.60	25.60		7.94	7.94		32.70	32.70		78.5	78.3		5.33	5.32		3.18	3.24		6	
27/4/2015	19:16	Fine	Middle	2.5	24.50	24.50	24.55	8.08	8.08	8.09	31.94	31.94	31.94	95.0	93.0	94.2	6.58	6.44	6.53	2.96	2.45	2.55	4	4.00
	19:17		Middle	2.5	24.60	24.60		8.10	8.09		31.93	31.93		95.3	93.6		6.60	6.48		2.30	2.48		4	

Remarks:  
Single underline denotes exceedance over Action Level.  
Double underline denotes exceedance over Limit Level.



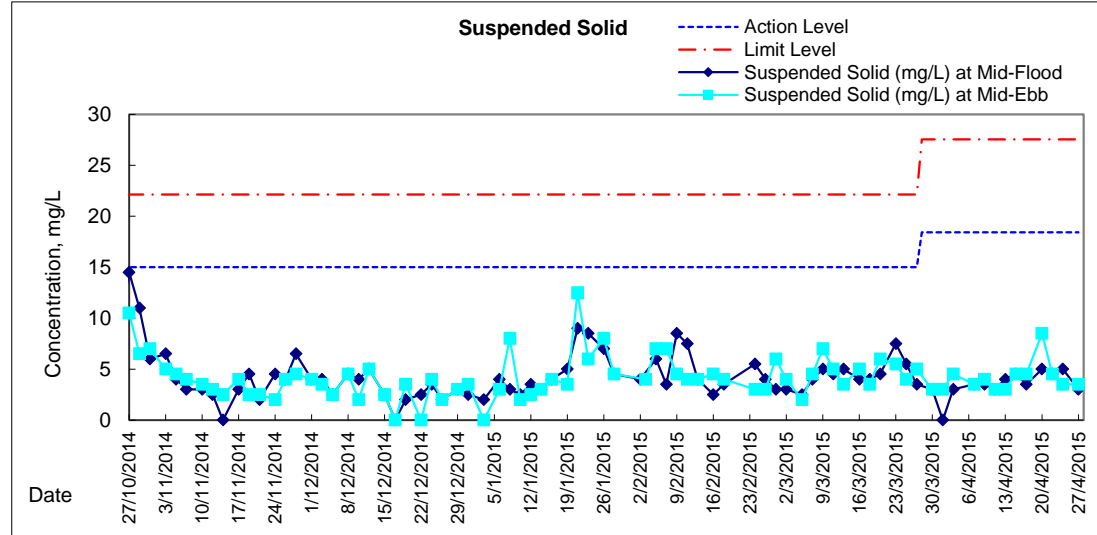
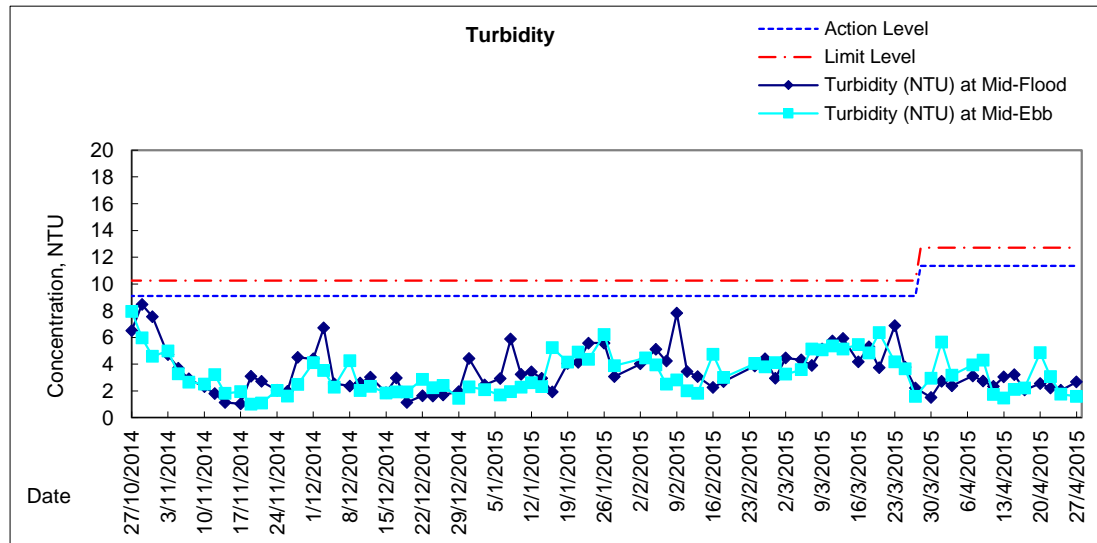
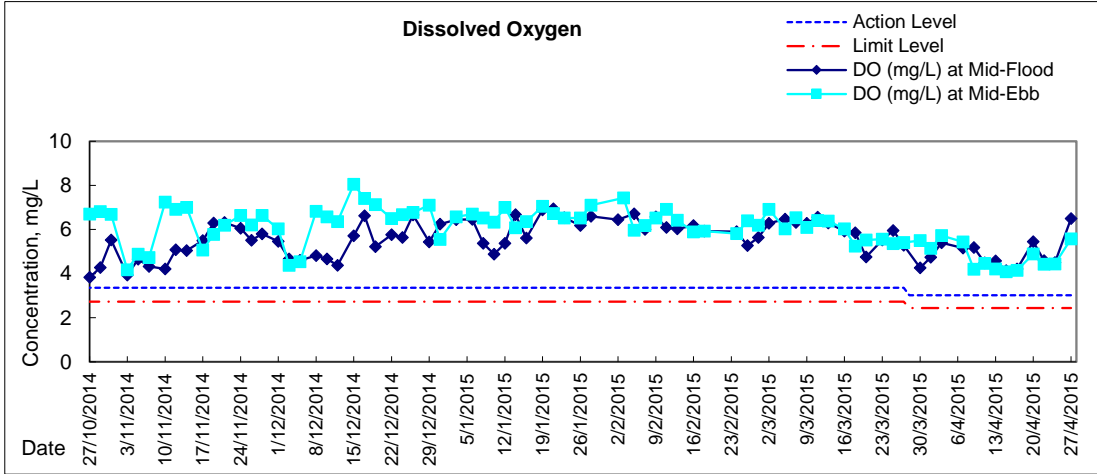


# Graphic Presentation of Water Quality Result of WSD19 - Sheung Wan



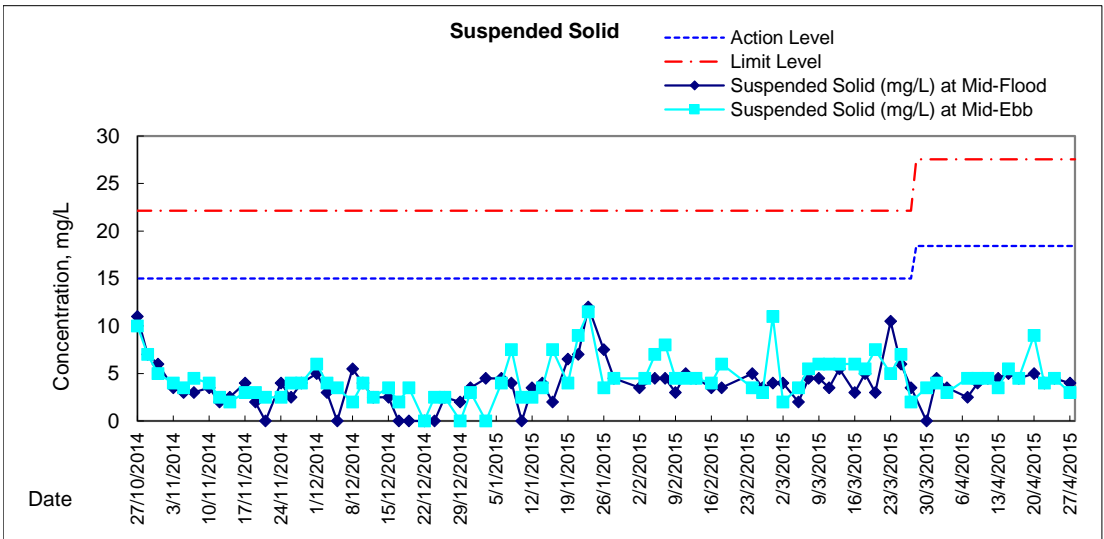
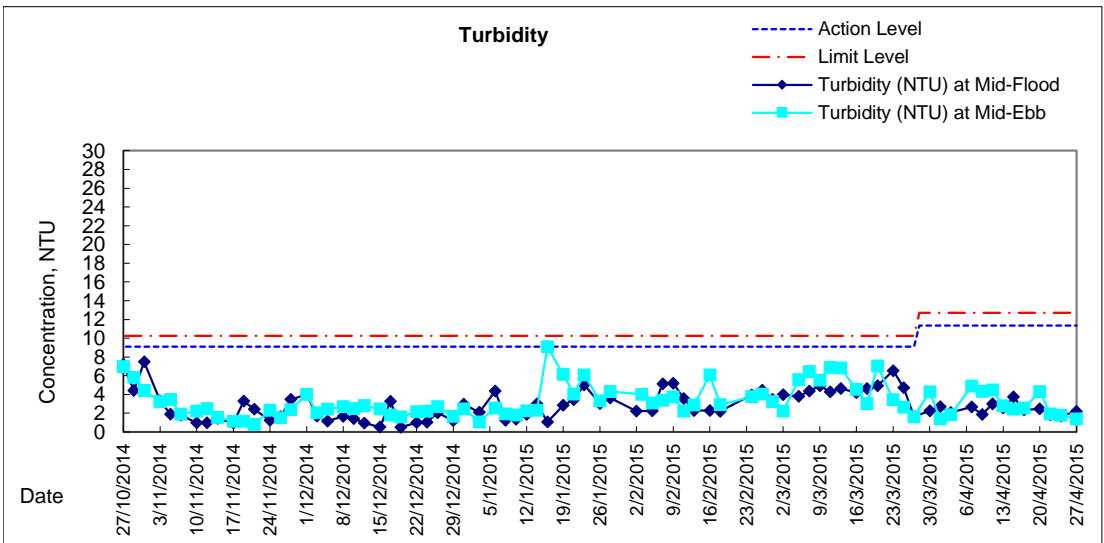
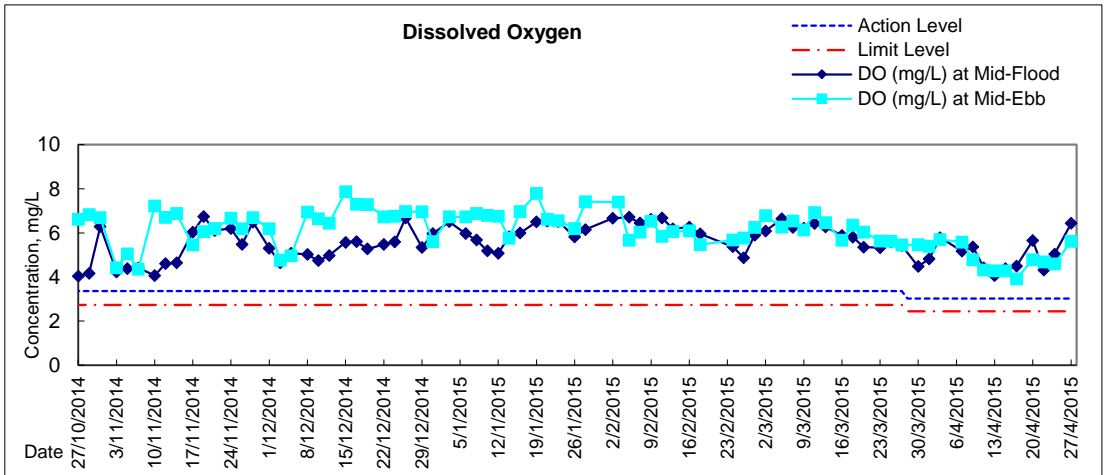


### Graphic Presentation of Water Quality Result of C1 - HKCEC



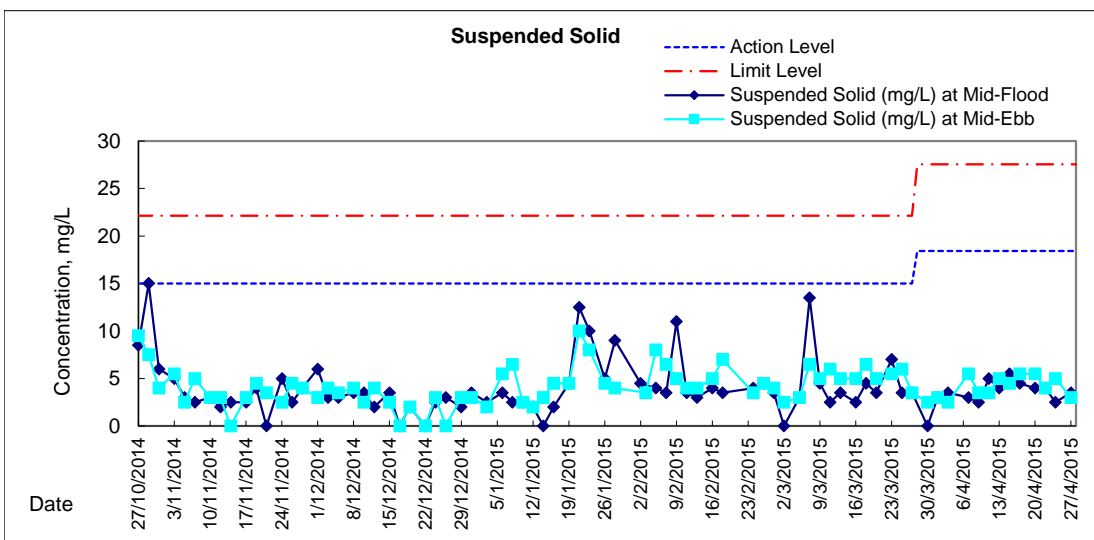
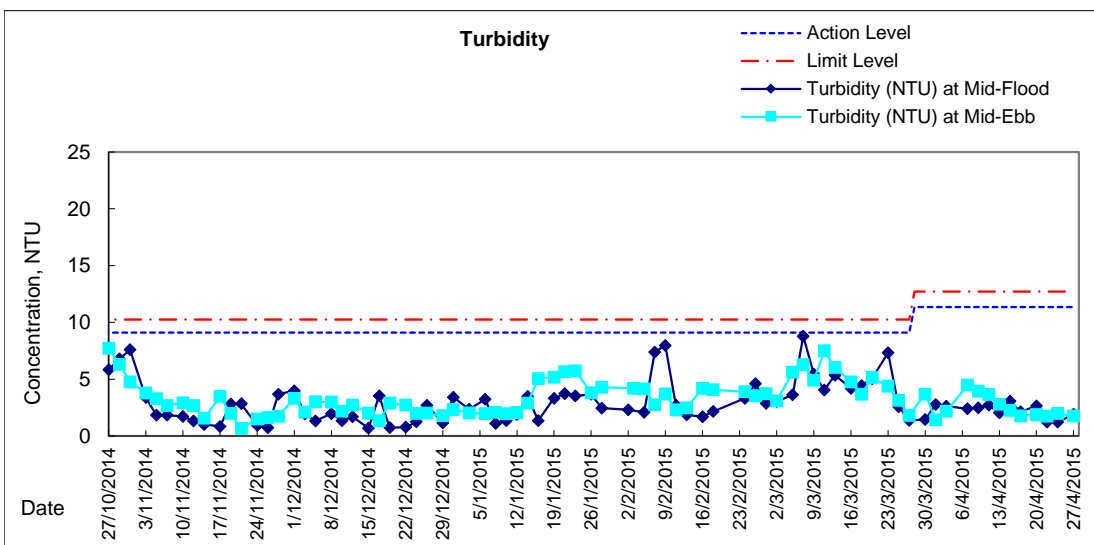
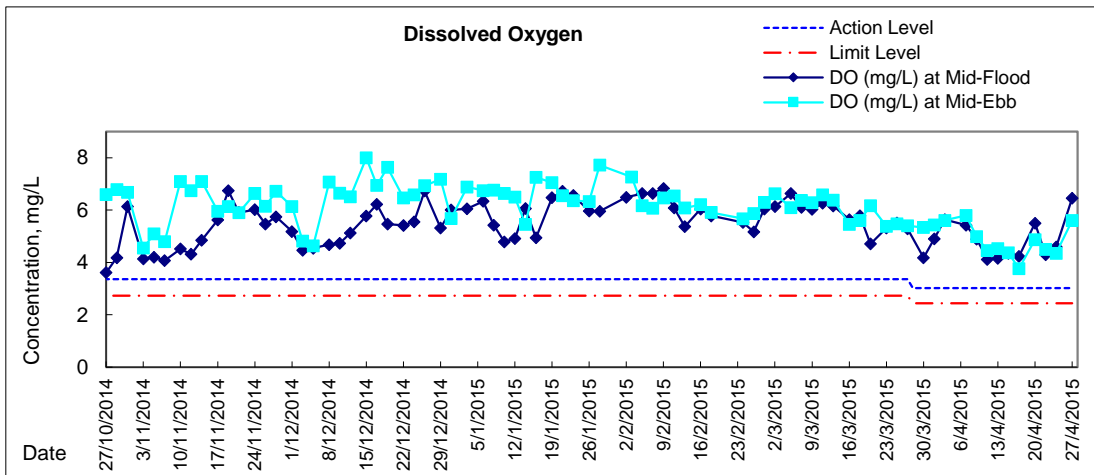


# Graphic Presentation of Water Quality Result of P1 - HKCEC Phase I



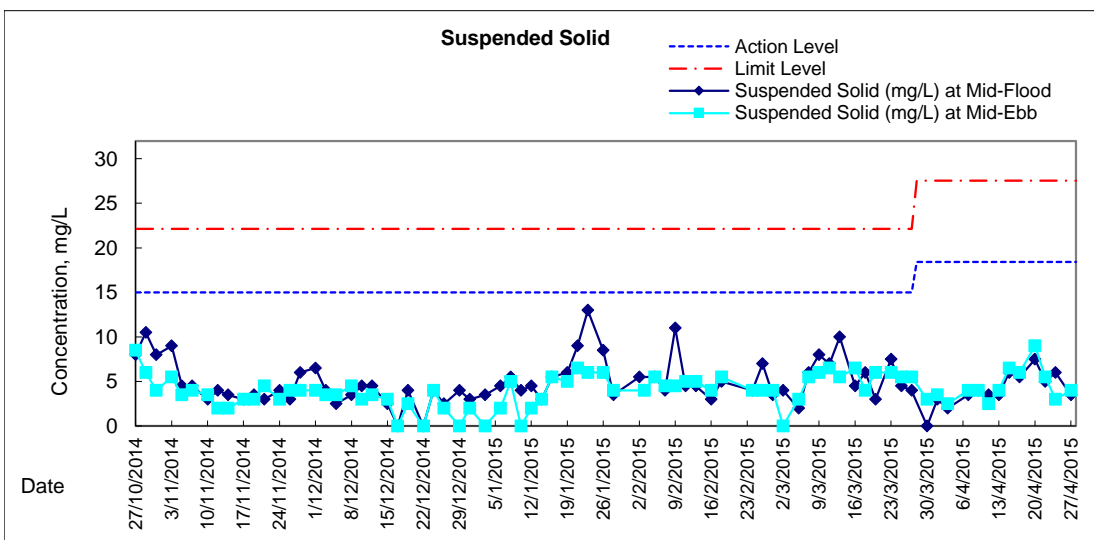
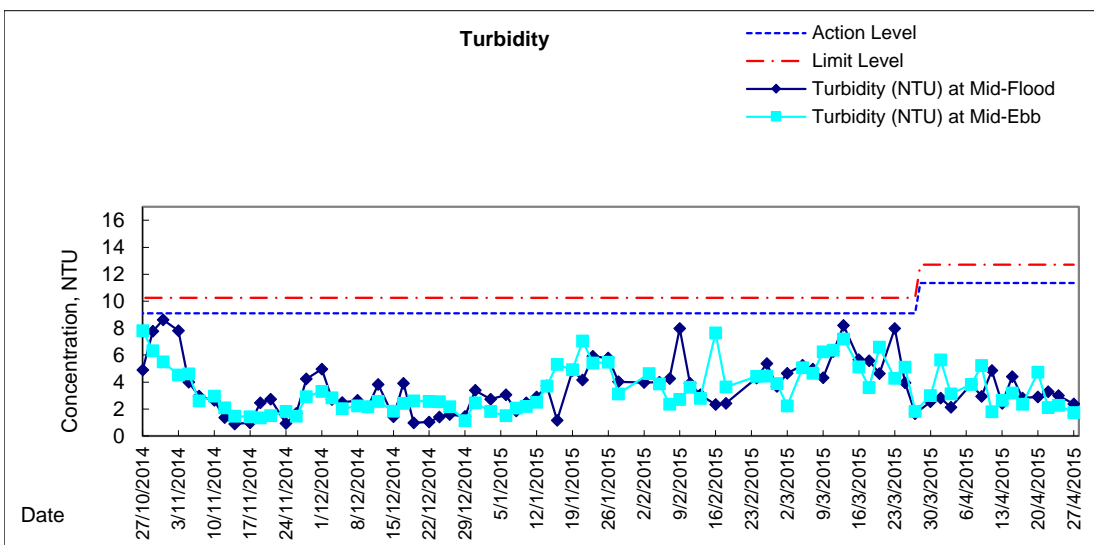
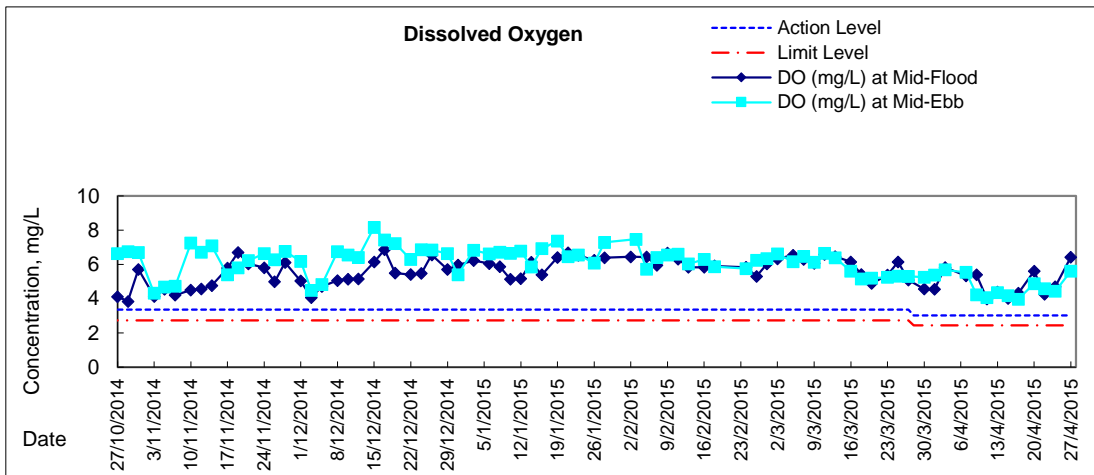


# Graphic Presentation of Water Quality Result of P3 - APA



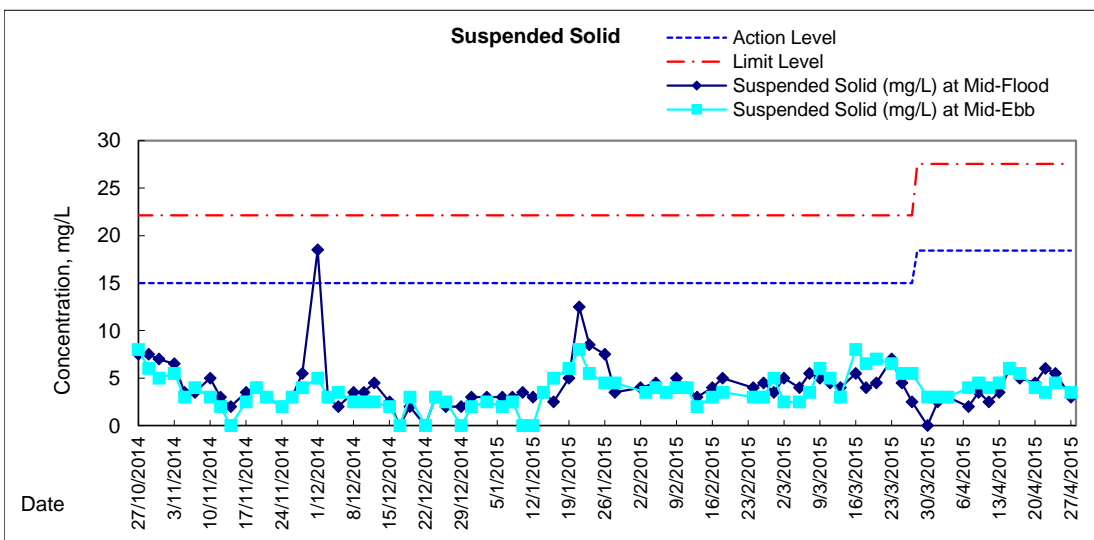
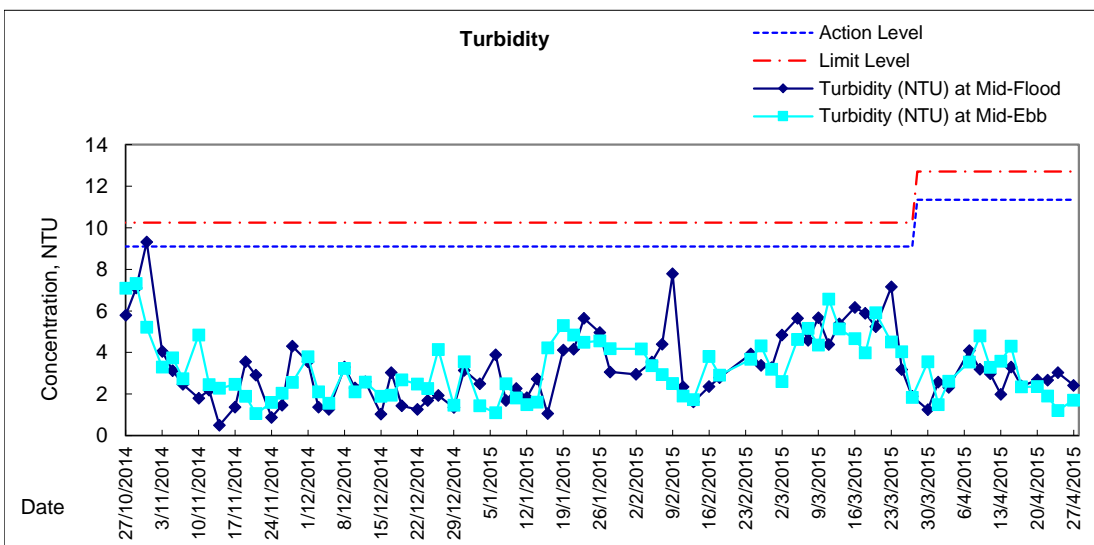
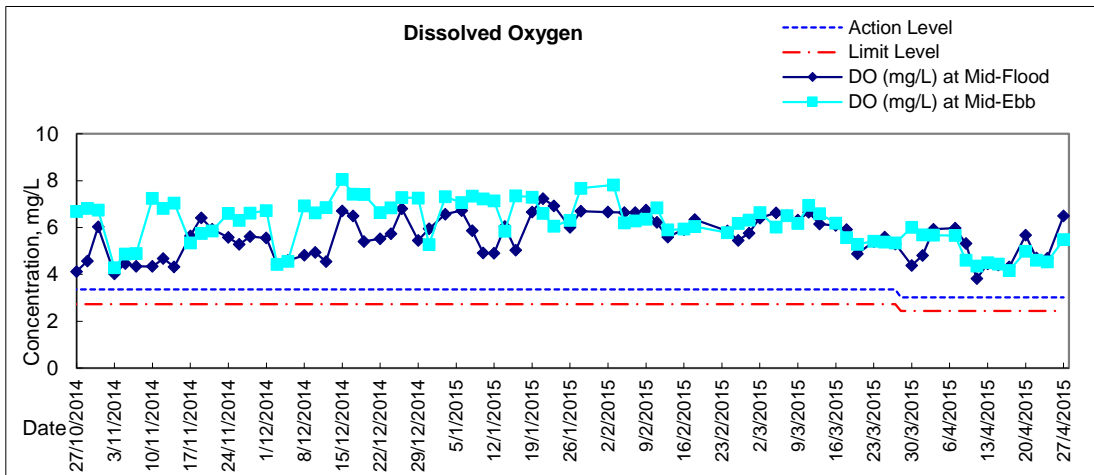


### Graphic Presentation of Water Quality Result of P5 - WCT / RT / IT



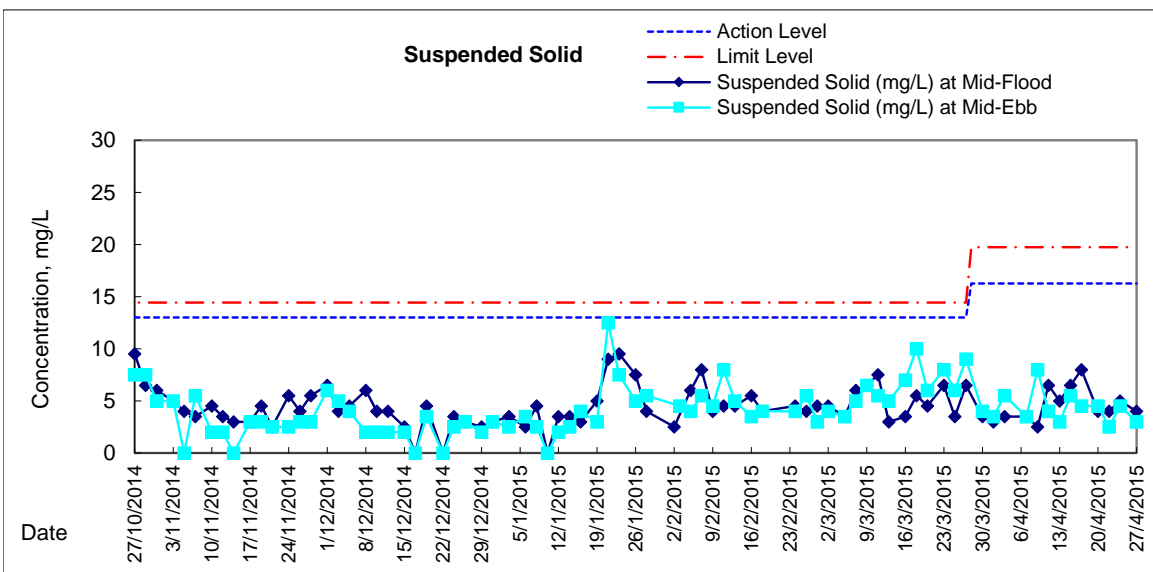
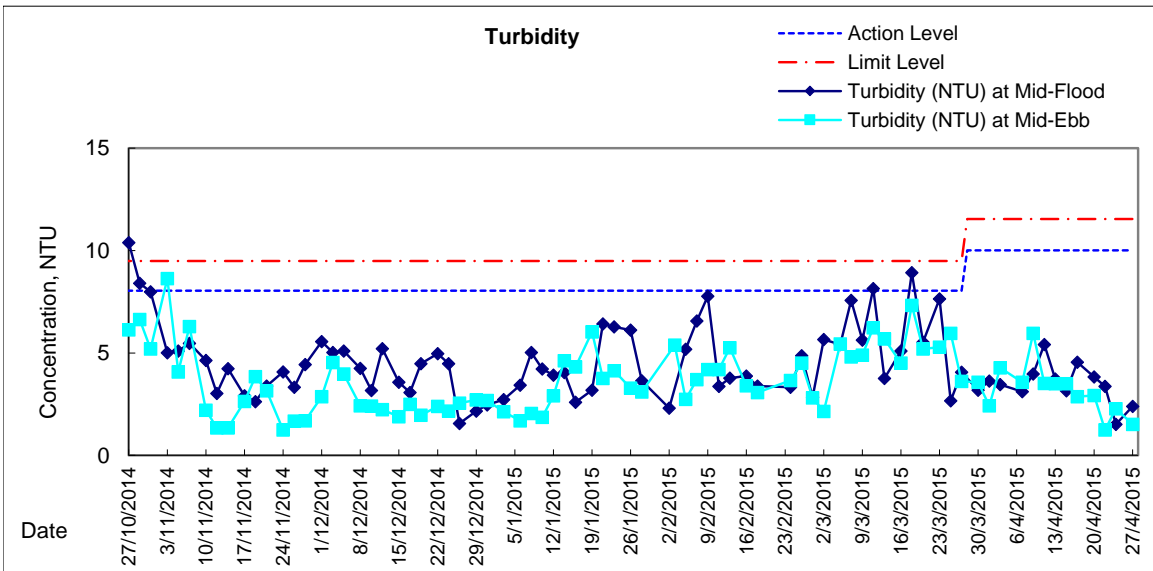
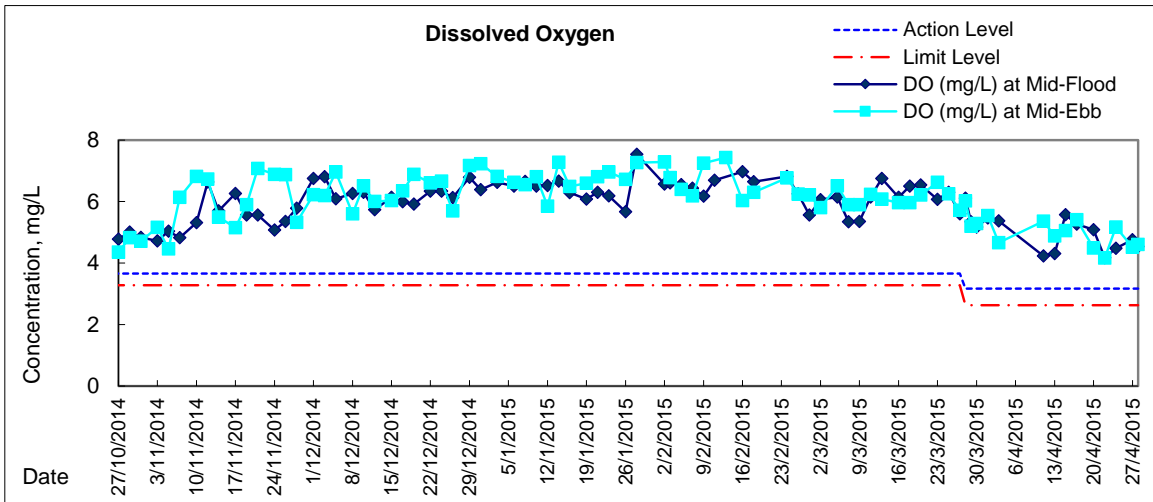


### Graphic Presentation of Water Quality Result of P4 - SOC



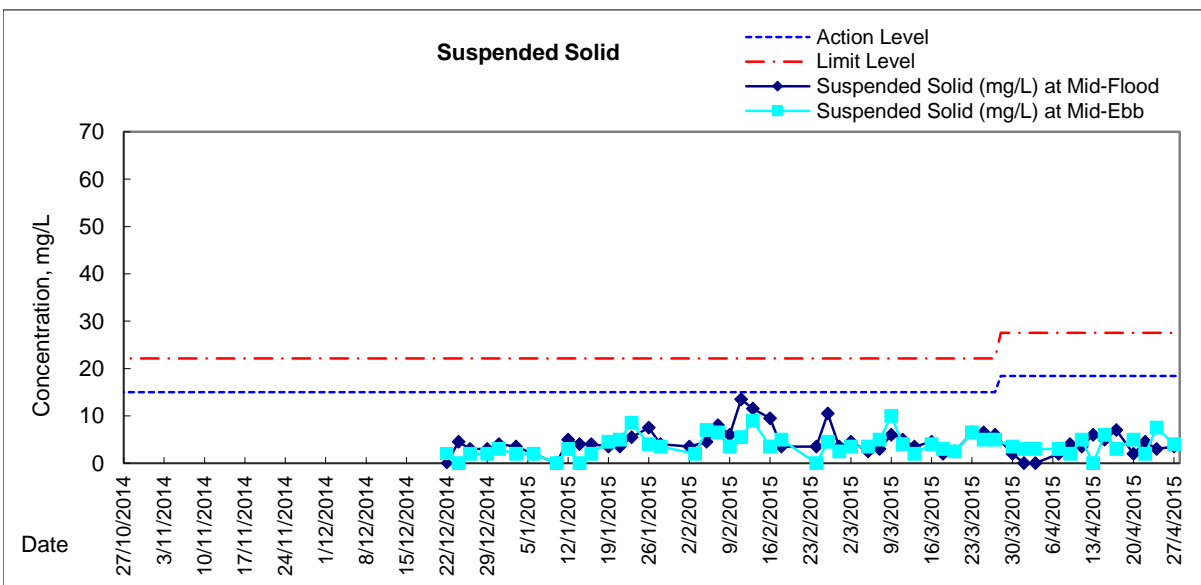
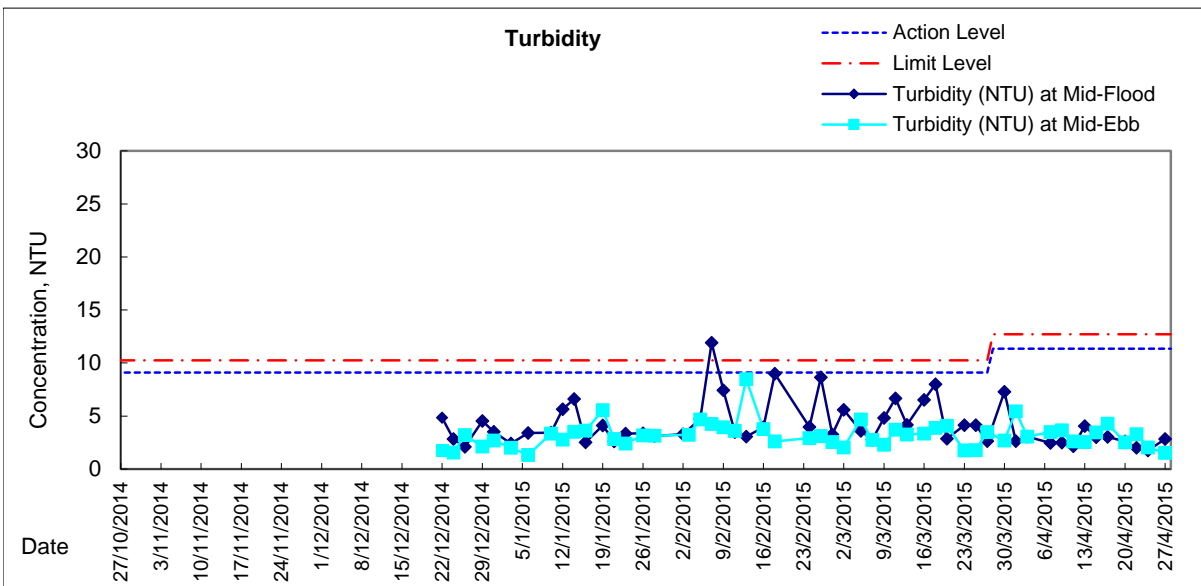
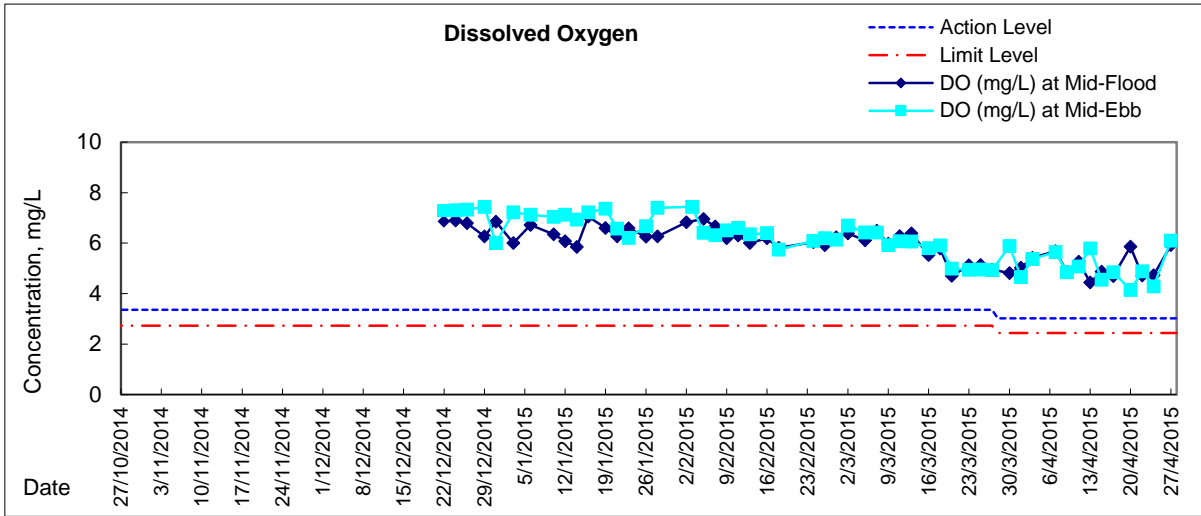


# Graphic Presentation of Water Quality Result of RW21-P789 - GEC/CRC/SHK





# Graphic Presentation of Water Quality Result of C7 - Windsor House







**Water Monitoring Result at C6 - Excelsior Hotel  
Mid-Flood Tide**

Date	Time	Weater Condition	Sampling Depth		Water Temperature			pH			Salinity		DO Saturation		DO				
					°C			-			ppt		%		mg/L				
			m	Value	Average	Value	Average	Value	Average	Value	Average	Value	Average	Value	Average				
30/3/2015	-	Fine	Surface	-	-	-	-	-	-	-	-	-	-	-	-	-	-	-	
	16:00		Middle	1.5	22.00	22.00	22.0	8.04	8.04	8.0	31.70	31.70	31.7	56.1	56.2	56.2	4.03	4.04	4.04
	-		Bottom	-	-	-	-	-	-	-	-	-	-	-	-	-	-	-	-
1/4/2015	-	Fine	Surface	-	-	-	-	-	-	-	-	-	-	-	-	-	-	-	-
	16:37		Middle	1.5	22.60	22.60	22.6	8.01	8.01	8.0	31.41	31.41	31.4	62.1	62.3	62.2	4.46	4.47	4.47
	-		Bottom	-	-	-	-	-	-	-	-	-	-	-	-	-	-	-	-
3/4/2015	-	Cloudy	Surface	-	-	-	-	-	-	-	-	-	-	-	-	-	-	-	-
	17:53		Middle	1.5	23.40	23.40	23.4	7.97	7.97	8.0	31.59	31.59	31.6	67.8	67.9	67.9	4.81	4.82	4.82
	-		Bottom	-	-	-	-	-	-	-	-	-	-	-	-	-	-	-	-
7/4/2015	-	Cloudy	Surface	-	-	-	-	-	-	-	-	-	-	-	-	-	-	-	-
	7:22		Middle	1.5	24.00	24.00	24.0	7.89	7.89	7.9	31.18	31.19	31.2	76.5	76.4	76.5	5.39	5.39	5.39
	-		Bottom	-	-	-	-	-	-	-	-	-	-	-	-	-	-	-	-
9/4/2015	-	Cloudy	Surface	-	-	-	-	-	-	-	-	-	-	-	-	-	-	-	-
	8:00		Middle	1.5	20.90	20.90	20.9	8.17	8.17	8.2	29.13	29.13	29.1	57.8	57.9	57.9	4.36	4.37	4.37
	-		Bottom	-	-	-	-	-	-	-	-	-	-	-	-	-	-	-	-
11/4/2015	-	Cloudy	Surface	-	-	-	-	-	-	-	-	-	-	-	-	-	-	-	-
	11:00		Middle	1.5	21.10	21.10	21.1	8.18	8.18	8.2	31.47	31.47	31.5	64.5	65.2	64.9	4.79	4.84	4.82
	-		Bottom	-	-	-	-	-	-	-	-	-	-	-	-	-	-	-	-
13/4/2015	-	Fine	Surface	-	-	-	-	-	-	-	-	-	-	-	-	-	-	-	-
	12:45		Middle	1.5	22.20	22.20	22.2	8.13	8.13	8.1	31.47	31.47	31.5	41.7	42.2	42.0	3.02	3.06	3.04
	-		Bottom	-	-	-	-	-	-	-	-	-	-	-	-	-	-	-	-
15/4/2015	-	Fine	Surface	-	-	-	-	-	-	-	-	-	-	-	-	-	-	-	-
	15:30		Middle	1.5	23.30	23.30	23.3	8.12	8.12	8.1	31.66	31.66	31.7	52.7	53.2	53.0	3.74	3.77	3.76
	-		Bottom	-	-	-	-	-	-	-	-	-	-	-	-	-	-	-	-
17/4/2015	-	Fine	Surface	-	-	-	-	-	-	-	-	-	-	-	-	-	-	-	-
	17:54		Middle	1.5	23.30	23.20	23.3	8.09	8.09	8.1	31.76	31.76	31.8	50.1	50.7	50.4	3.56	3.65	3.61
	-		Bottom	-	-	-	-	-	-	-	-	-	-	-	-	-	-	-	-
20/4/2015	-	Cloudy	Surface	-	-	-	-	-	-	-	-	-	-	-	-	-	-	-	-
	16:59		Middle	1.0	25.00	25.00	25.0	8.06	8.06	8.1	27.62	27.62	27.6	58.5	60.4	59.5	4.13	4.26	4.20
	-		Bottom	-	-	-	-	-	-	-	-	-	-	-	-	-	-	-	-
22/4/2015	-	Cloudy	Surface	-	-	-	-	-	-	-	-	-	-	-	-	-	-	-	-
	9:15		Middle	1.5	23.00	23.00	23.0	7.96	7.96	8.0	31.98	31.98	32.0	66.3	63.4	64.9	4.73	4.63	4.68
	-		Bottom	-	-	-	-	-	-	-	-	-	-	-	-	-	-	-	-
24/4/2015	-	Fine	Surface	-	-	-	-	-	-	-	-	-	-	-	-	-	-	-	-
	10:32		Middle	1.5	23.60	23.60	23.6	7.97	7.97	8.0	31.68	31.68	31.7	63.8	64.0	63.9	4.60	4.61	4.61
	-		Bottom	-	-	-	-	-	-	-	-	-	-	-	-	-	-	-	-
28/4/2015	-	Fine	Surface	-	-	-	-	-	-	-	-	-	-	-	-	-	-	-	-
	3:49		Middle	1.5	23.70	23.70	23.7	8.12	8.12	8.1	27.62	27.62	27.6	50.1	51.1	50.6	3.61	3.68	3.65
	-		Bottom	-	-	-	-	-	-	-	-	-	-	-	-	-	-	-	-

Remarks:  
 Single underline denotes exceedance over Action Level.  
 Double underline denotes exceedance over Limit Level.



**Water Monitoring Result at Ex-WPCWA SW - South-western corners of ex-Public Cargo Works Area  
Mid-Flood Tide**

Date	Time	Weater Condition	Sampling Depth		Water Temperature			pH			Salinity		DO Saturation		DO				
					°C			-			ppt		%		mg/L				
			m	Value	Average	Value	Average	Value	Average	Value	Average	Value	Average	Value	Average				
30/3/2015	-	Fine	Surface	-	-	-	-	-	-	-	-	-	-	-	-	-	-	-	
	15:43		Middle	1.5	21.70	21.70	21.7	8.04	8.04	8.0	31.45	31.45	31.5	56.5	55.3	55.9	4.13	4.06	4.10
	-		Bottom	-	-	-	-	-	-	-	-	-	-	-	-	-	-	-	-
1/4/2015	-	Fine	Surface	-	-	-	-	-	-	-	-	-	-	-	-	-	-	-	
	16:23		Middle	1.5	22.40	22.40	22.4	8.02	8.02	8.0	27.53	27.53	27.5	45.3	45.5	45.4	3.35	3.36	3.36
	-		Bottom	-	-	-	-	-	-	-	-	-	-	-	-	-	-	-	-
3/4/2015	-	Cloudy	Surface	-	-	-	-	-	-	-	-	-	-	-	-	-	-	-	
	17:27		Middle	1.5	23.50	23.50	23.5	7.98	7.98	8.0	29.66	29.66	29.7	57.2	56.2	56.7	4.12	4.02	4.07
	-		Bottom	-	-	-	-	-	-	-	-	-	-	-	-	-	-	-	-
7/4/2015	-	Cloudy	Surface	-	-	-	-	-	-	-	-	-	-	-	-	-	-	-	
	8:45		Middle	1.5	23.80	23.80	23.8	7.91	7.91	7.9	30.44	30.55	30.5	66.7	66.5	66.6	4.74	4.72	4.73
	-		Bottom	-	-	-	-	-	-	-	-	-	-	-	-	-	-	-	-
9/4/2015	-	Cloudy	Surface	-	-	-	-	-	-	-	-	-	-	-	-	-	-	-	
	7:45		Middle	1.5	20.70	20.70	20.7	8.21	8.21	8.2	28.25	28.25	28.3	51.4	52.9	52.2	3.91	4.03	3.97
	-		Bottom	-	-	-	-	-	-	-	-	-	-	-	-	-	-	-	-
11/4/2015	-	Cloudy	Surface	-	-	-	-	-	-	-	-	-	-	-	-	-	-	-	
	10:50		Middle	1.5	21.20	21.20	21.2	8.19	8.19	8.2	31.06	31.06	31.1	49.8	49.3	49.6	3.69	3.66	3.68
	-		Bottom	-	-	-	-	-	-	-	-	-	-	-	-	-	-	-	-
13/4/2015	-	Fine	Surface	-	-	-	-	-	-	-	-	-	-	-	-	-	-	-	
	11:10		Middle	1.5	22.20	22.20	22.2	8.19	8.19	8.2	31.51	31.51	31.5	50.5	49.7	50.1	3.67	3.61	3.64
	-		Bottom	-	-	-	-	-	-	-	-	-	-	-	-	-	-	-	-
15/4/2015	-	Fine	Surface	-	-	-	-	-	-	-	-	-	-	-	-	-	-	-	
	15:07		Middle	1.5	22.50	22.50	22.5	8.15	8.15	8.2	32.66	32.66	32.7	50.0	47.9	49.0	3.58	3.43	3.51
	-		Bottom	-	-	-	-	-	-	-	-	-	-	-	-	-	-	-	-
17/4/2015	-	Fine	Surface	-	-	-	-	-	-	-	-	-	-	-	-	-	-	-	
	17:23		Middle	1.5	23.20	23.20	23.2	8.14	8.14	8.1	30.17	30.17	30.2	45.4	45.8	45.6	3.26	3.29	3.28
	-		Bottom	-	-	-	-	-	-	-	-	-	-	-	-	-	-	-	-
20/4/2015	-	Cloudy	Surface	-	-	-	-	-	-	-	-	-	-	-	-	-	-	-	
	17:22		Middle	1.0	24.70	24.70	24.7	7.96	7.96	8.0	25.14	25.14	25.1	46.4	48.2	47.3	3.33	3.46	3.40
	-		Bottom	-	-	-	-	-	-	-	-	-	-	-	-	-	-	-	-
22/4/2015	-	Cloudy	Surface	-	-	-	-	-	-	-	-	-	-	-	-	-	-	-	
	8:58		Middle	1.5	22.90	22.90	22.9	7.98	7.98	8.0	31.31	31.31	31.3	66.4	65.7	66.1	4.76	4.71	4.74
	-		Bottom	-	-	-	-	-	-	-	-	-	-	-	-	-	-	-	-
24/4/2015	-	Fine	Surface	-	-	-	-	-	-	-	-	-	-	-	-	-	-	-	
	10:18		Middle	1.5	23.10	23.10	23.1	7.98	7.98	8.0	32.53	32.53	32.5	57.0	56.0	56.5	4.05	3.98	4.02
	-		Bottom	-	-	-	-	-	-	-	-	-	-	-	-	-	-	-	-
28/4/2015	-	Fine	Surface	-	-	-	-	-	-	-	-	-	-	-	-	-	-	-	
	0:46		Middle	1.5	23.90	23.90	23.9	8.01	8.01	8.0	29.93	29.93	29.9	63.7	63.1	63.4	4.52	4.47	4.50
	-		Bottom	-	-	-	-	-	-	-	-	-	-	-	-	-	-	-	-

Remarks:  
Single underline denotes exceedance over Action Level.  
Double underline denotes exceedance over Limit Level.



**Water Monitoring Result at Ex-WPCWA SE - South-eastern corners of ex-Public Cargo Works Area  
Mid-Flood Tide**

Date	Time	Weather Condition	Sampling Depth		Water Temperature		pH		Salinity		DO Saturation		DO				
			m		°C		-		ppt		%		mg/L				
					Value	Average	Value	Average	Value	Average	Value	Average	Value	Average			
30/3/2015	-	Fine	Surface	-	-	-	-	-	-	-	-	-	-	-	-	-	-
	-		Middle	-	-	-	-	-	-	-	-	-	-	-	-	-	-
	-		Bottom	-	-	-	-	-	-	-	-	-	-	-	-	-	-
1/4/2015	-	Fine	Surface	-	-	-	-	-	-	-	-	-	-	-	-	-	-
	-		Middle	-	-	-	-	-	-	-	-	-	-	-	-	-	-
	-		Bottom	-	-	-	-	-	-	-	-	-	-	-	-	-	-
3/4/2015	-	Cloudy	Surface	-	-	-	-	-	-	-	-	-	-	-	-	-	-
	-		Middle	-	-	-	-	-	-	-	-	-	-	-	-	-	-
	-		Bottom	-	-	-	-	-	-	-	-	-	-	-	-	-	-
7/4/2015	-	Cloudy	Surface	-	-	-	-	-	-	-	-	-	-	-	-	-	-
	-		Middle	-	-	-	-	-	-	-	-	-	-	-	-	-	-
	-		Bottom	-	-	-	-	-	-	-	-	-	-	-	-	-	-
9/4/2015	-	Cloudy	Surface	-	-	-	-	-	-	-	-	-	-	-	-	-	-
	-		Middle	-	-	-	-	-	-	-	-	-	-	-	-	-	-
	-		Bottom	-	-	-	-	-	-	-	-	-	-	-	-	-	-
11/4/2015	-	Cloudy	Surface	-	-	-	-	-	-	-	-	-	-	-	-	-	-
	-		Middle	-	-	-	-	-	-	-	-	-	-	-	-	-	-
	-		Bottom	-	-	-	-	-	-	-	-	-	-	-	-	-	-
13/4/2015	-	Fine	Surface	-	-	-	-	-	-	-	-	-	-	-	-	-	-
	-		Middle	-	-	-	-	-	-	-	-	-	-	-	-	-	-
	-		Bottom	-	-	-	-	-	-	-	-	-	-	-	-	-	-
15/4/2015	-	Fine	Surface	-	-	-	-	-	-	-	-	-	-	-	-	-	-
	-		Middle	-	-	-	-	-	-	-	-	-	-	-	-	-	-
	-		Bottom	-	-	-	-	-	-	-	-	-	-	-	-	-	-
17/4/2015	-	Fine	Surface	-	-	-	-	-	-	-	-	-	-	-	-	-	-
	-		Middle	-	-	-	-	-	-	-	-	-	-	-	-	-	-
	-		Bottom	-	-	-	-	-	-	-	-	-	-	-	-	-	-
20/4/2015	-	Cloudy	Surface	-	-	-	-	-	-	-	-	-	-	-	-	-	-
	-		Middle	-	-	-	-	-	-	-	-	-	-	-	-	-	-
	-		Bottom	-	-	-	-	-	-	-	-	-	-	-	-	-	-
22/4/2015	-	Cloudy	Surface	-	-	-	-	-	-	-	-	-	-	-	-	-	-
	-		Middle	-	-	-	-	-	-	-	-	-	-	-	-	-	-
	-		Bottom	-	-	-	-	-	-	-	-	-	-	-	-	-	-
24/4/2015	-	Fine	Surface	-	-	-	-	-	-	-	-	-	-	-	-	-	-
	-		Middle	-	-	-	-	-	-	-	-	-	-	-	-	-	-
	-		Bottom	-	-	-	-	-	-	-	-	-	-	-	-	-	-
28/4/2015	-	Fine	Surface	-	-	-	-	-	-	-	-	-	-	-	-	-	-
	-		Middle	-	-	-	-	-	-	-	-	-	-	-	-	-	-
	-		Bottom	-	-	-	-	-	-	-	-	-	-	-	-	-	-

Remarks:  
 Single underline denotes exceedance over Action Level.  
 Double underline denotes exceedance over Limit Level.



**Water Monitoring Result at C6 - Excelsior Hotel  
Mid-Ebb Tide**

Date	Time	Weater Condition	Sampling Depth		Water Temperature			pH			Salinity			DO Saturation			DO		
					°C			-			ppt			%			mg/L		
			m	Value	Average	Value	Average	Value	Average	Value	Average	Value	Average	Value	Average	Value	Average		
30/3/2015	-	Cloudy	Surface	-	-	-	-	-	-	-	-	-	-	-	-	-	-	-	-
	21:15		Middle	1.5	21.90	21.90	21.9	7.71	7.71	7.7	31.41	31.41	31.4	63.6	64.0	63.8	4.64	4.66	4.65
	-		Bottom	-	-	-	-	-	-	-	-	-	-	-	-	-	-	-	-
1/4/2015	-	Fine	Surface	-	-	-	-	-	-	-	-	-	-	-	-	-	-	-	-
	9:45		Middle	1.5	21.50	21.50	21.5	8.03	8.03	8.0	31.54	31.54	31.5	43.0	43.3	43.2	3.16	3.17	3.17
	-		Bottom	-	-	-	-	-	-	-	-	-	-	-	-	-	-	-	-
3/4/2015	-	Sunny	Surface	-	-	-	-	-	-	-	-	-	-	-	-	-	-	-	-
	14:02		Middle	1.0	24.50	24.50	24.5	7.74	7.74	7.7	29.32	29.33	29.3	56.3	56.7	56.5	3.97	3.99	3.98
	-		Bottom	-	-	-	-	-	-	-	-	-	-	-	-	-	-	-	-
7/4/2015	-	Cloudy	Surface	-	-	-	-	-	-	-	-	-	-	-	-	-	-	-	-
	14:02		Middle	1.5	23.80	23.80	23.8	7.99	7.99	8.0	29.93	29.93	29.9	70.6	71.2	70.9	5.10	5.10	5.10
	-		Bottom	-	-	-	-	-	-	-	-	-	-	-	-	-	-	-	-
9/4/2015	-	Cloudy	Surface	-	-	-	-	-	-	-	-	-	-	-	-	-	-	-	-
	15:10		Middle	1.5	21.40	21.40	21.4	8.16	8.16	8.2	31.00	31.06	31.0	63.7	63.0	63.4	4.71	4.66	4.69
	-		Bottom	-	-	-	-	-	-	-	-	-	-	-	-	-	-	-	-
11/4/2015	-	Rainy	Surface	-	-	-	-	-	-	-	-	-	-	-	-	-	-	-	-
	17:15		Middle	1.5	20.70	20.70	20.7	8.21	8.21	8.2	31.15	31.15	31.2	61.6	63.9	62.8	4.61	4.78	4.70
	-		Bottom	-	-	-	-	-	-	-	-	-	-	-	-	-	-	-	-
13/4/2015	-	Fine	Surface	-	-	-	-	-	-	-	-	-	-	-	-	-	-	-	-
	18:24		Middle	1.5	22.20	22.20	22.2	7.85	7.85	7.9	31.70	31.70	31.7	63.0	63.2	63.1	4.57	4.58	4.58
	-		Bottom	-	-	-	-	-	-	-	-	-	-	-	-	-	-	-	-
15/4/2015	-	Fine	Surface	-	-	-	-	-	-	-	-	-	-	-	-	-	-	-	-
	11:16		Middle	1.5	22.70	22.70	22.7	8.14	8.14	8.1	32.13	32.13	32.1	59.2	60.3	59.8	4.24	4.32	4.28
	-		Bottom	-	-	-	-	-	-	-	-	-	-	-	-	-	-	-	-
17/4/2015	-	Fine	Surface	-	-	-	-	-	-	-	-	-	-	-	-	-	-	-	-
	10:00		Middle	1.5	22.90	22.90	22.9	8.13	8.13	8.1	32.19	32.19	32.2	57.6	57.2	57.4	4.10	4.08	4.09
	-		Bottom	-	-	-	-	-	-	-	-	-	-	-	-	-	-	-	-
20/4/2015	-	Cloudy	Surface	-	-	-	-	-	-	-	-	-	-	-	-	-	-	-	-
	12:35		Middle	1.5	23.70	23.70	23.7	8.00	8.00	8.0	31.00	31.00	31.0	47.5	46.0	46.8	3.35	3.23	3.29
	-		Bottom	-	-	-	-	-	-	-	-	-	-	-	-	-	-	-	-
22/4/2015	-	Sunny	Surface	-	-	-	-	-	-	-	-	-	-	-	-	-	-	-	-
	15:33		Middle	1.5	23.60	23.60	23.6	7.91	7.91	7.9	31.11	31.11	31.1	60.7	58.8	59.8	4.28	4.17	4.23
	-		Bottom	-	-	-	-	-	-	-	-	-	-	-	-	-	-	-	-
24/4/2015	-	Fine	Surface	-	-	-	-	-	-	-	-	-	-	-	-	-	-	-	-
	16:43		Middle	1.5	24.10	24.10	24.1	7.97	7.97	8.0	32.09	32.09	32.1	58.4	57.1	57.8	4.08	3.97	4.03
	-		Bottom	-	-	-	-	-	-	-	-	-	-	-	-	-	-	-	-
27/4/2015	-	Fine	Surface	-	-	-	-	-	-	-	-	-	-	-	-	-	-	-	-
	18:15		Middle	1.5	24.50	24.50	24.5	8.15	8.15	8.2	27.60	27.60	27.6	67.1	66.4	66.8	4.77	4.73	4.75
	-		Bottom	-	-	-	-	-	-	-	-	-	-	-	-	-	-	-	-

Remarks:  
Single underline denotes exceedance over Action Level.  
Double underline denotes exceedance over Limit Level.



**Water Monitoring Result at Ex-WPCWA SW - South-western corners of ex-Public Cargo Works Area  
Mid-Ebb Tide**

Date	Time	Weather Condition	Sampling Depth		Water Temperature °C			pH			Salinity ppt			DO Saturation %			DO mg/L		
			m		Value	Value	Average	Value	Value	Average	Value	Value	Average	Value	Value	Average	Value	Value	Average
30/3/2015	-	Cloudy	Surface	-	-	-	-	-	-	-	-	-	-	-	-	-	-	-	-
	20:45		Middle	1.5	21.90	21.90	21.9	7.83	7.83	7.8	22.71	22.71	22.7	51.0	52.7	51.9	3.91	4.04	3.98
	-		Bottom	-	-	-	-	-	-	-	-	-	-	-	-	-	-	-	-
1/4/2015	-	Fine	Surface	-	-	-	-	-	-	-	-	-	-	-	-	-	-	-	-
	9:30		Middle	1.5	21.50	21.50	21.5	8.03	8.03	8.0	31.04	31.04	31.0	51.5	51.3	51.4	3.75	3.76	3.76
	-		Bottom	-	-	-	-	-	-	-	-	-	-	-	-	-	-	-	-
3/4/2015	-	Sunny	Surface	-	-	-	-	-	-	-	-	-	-	-	-	-	-	-	-
	13:40		Middle	1.5	24.60	24.60	24.6	7.85	7.85	7.9	21.45	21.45	21.5	45.2	46.3	45.8	3.32	3.41	3.37
	-		Bottom	-	-	-	-	-	-	-	-	-	-	-	-	-	-	-	-
7/4/2015	-	Cloudy	Surface	-	-	-	-	-	-	-	-	-	-	-	-	-	-	-	-
	13:37		Middle	1.5	23.70	23.70	23.7	7.96	7.96	8.0	30.38	30.38	30.4	73.3	73.5	73.4	5.32	5.35	5.34
	-		Bottom	-	-	-	-	-	-	-	-	-	-	-	-	-	-	-	-
9/4/2015	-	Cloudy	Surface	-	-	-	-	-	-	-	-	-	-	-	-	-	-	-	-
	14:53		Middle	1.5	21.50	21.50	21.5	8.15	8.15	8.2	31.36	31.36	31.4	44.5	43.7	44.1	3.27	3.21	3.24
	-		Bottom	-	-	-	-	-	-	-	-	-	-	-	-	-	-	-	-
11/4/2015	-	Rainy	Surface	-	-	-	-	-	-	-	-	-	-	-	-	-	-	-	-
	16:55		Middle	1.5	21.10	21.10	21.1	8.24	8.24	8.2	31.82	31.82	31.8	47.9	47.7	47.8	3.54	3.53	3.54
	-		Bottom	-	-	-	-	-	-	-	-	-	-	-	-	-	-	-	-
13/4/2015	-	Fine	Surface	-	-	-	-	-	-	-	-	-	-	-	-	-	-	-	-
	19:37		Middle	1.5	22.00	22.00	22.0	8.09	8.09	8.1	23.63	23.63	23.6	55.4	55.7	55.6	4.22	4.25	4.24
	-		Bottom	-	-	-	-	-	-	-	-	-	-	-	-	-	-	-	-
15/4/2015	-	Fine	Surface	-	-	-	-	-	-	-	-	-	-	-	-	-	-	-	-
	11:05		Middle	1.5	22.20	22.20	22.2	8.12	8.12	8.1	30.86	30.86	30.9	47.5	47.8	47.7	3.24	3.26	3.25
	-		Bottom	-	-	-	-	-	-	-	-	-	-	-	-	-	-	-	-
17/4/2015	-	Fine	Surface	-	-	-	-	-	-	-	-	-	-	-	-	-	-	-	-
	9:50		Middle	1.5	22.80	22.80	22.8	8.14	8.14	8.1	31.84	31.84	31.8	46.5	47.4	47.0	3.33	3.39	3.36
	-		Bottom	-	-	-	-	-	-	-	-	-	-	-	-	-	-	-	-
20/4/2015	-	Cloudy	Surface	-	-	-	-	-	-	-	-	-	-	-	-	-	-	-	-
	12:22		Middle	1.5	23.60	23.60	23.6	8.19	8.19	8.2	31.45	31.45	31.5	50.3	49.2	49.8	3.56	3.48	3.52
	-		Bottom	-	-	-	-	-	-	-	-	-	-	-	-	-	-	-	-
22/4/2015	-	Sunny	Surface	-	-	-	-	-	-	-	-	-	-	-	-	-	-	-	-
	15:17		Middle	1.5	23.60	23.60	23.6	8.11	8.11	8.1	24.79	24.79	24.8	32.4	33.0	32.7	2.37	2.42	<u>2.40</u>
	-		Bottom	-	-	-	-	-	-	-	-	-	-	-	-	-	-	-	-
24/4/2015	-	Fine	Surface	-	-	-	-	-	-	-	-	-	-	-	-	-	-	-	-
	16:30		Middle	1.5	24.00	24.00	24.0	7.99	7.99	8.0	29.14	29.14	29.1	65.6	67.6	66.6	4.63	4.77	4.70
	-		Bottom	-	-	-	-	-	-	-	-	-	-	-	-	-	-	-	-
27/4/2015	-	Fine	Surface	-	-	-	-	-	-	-	-	-	-	-	-	-	-	-	-
	18:55		Middle	1.5	24.20	24.20	24.2	8.10	8.10	8.1	25.88	25.88	25.9	63.3	63.6	63.5	4.58	4.60	4.59
	-		Bottom	-	-	-	-	-	-	-	-	-	-	-	-	-	-	-	-

Remarks:  
Single underline denotes exceedance over Action Level.  
Double underline denotes exceedance over Limit Level.



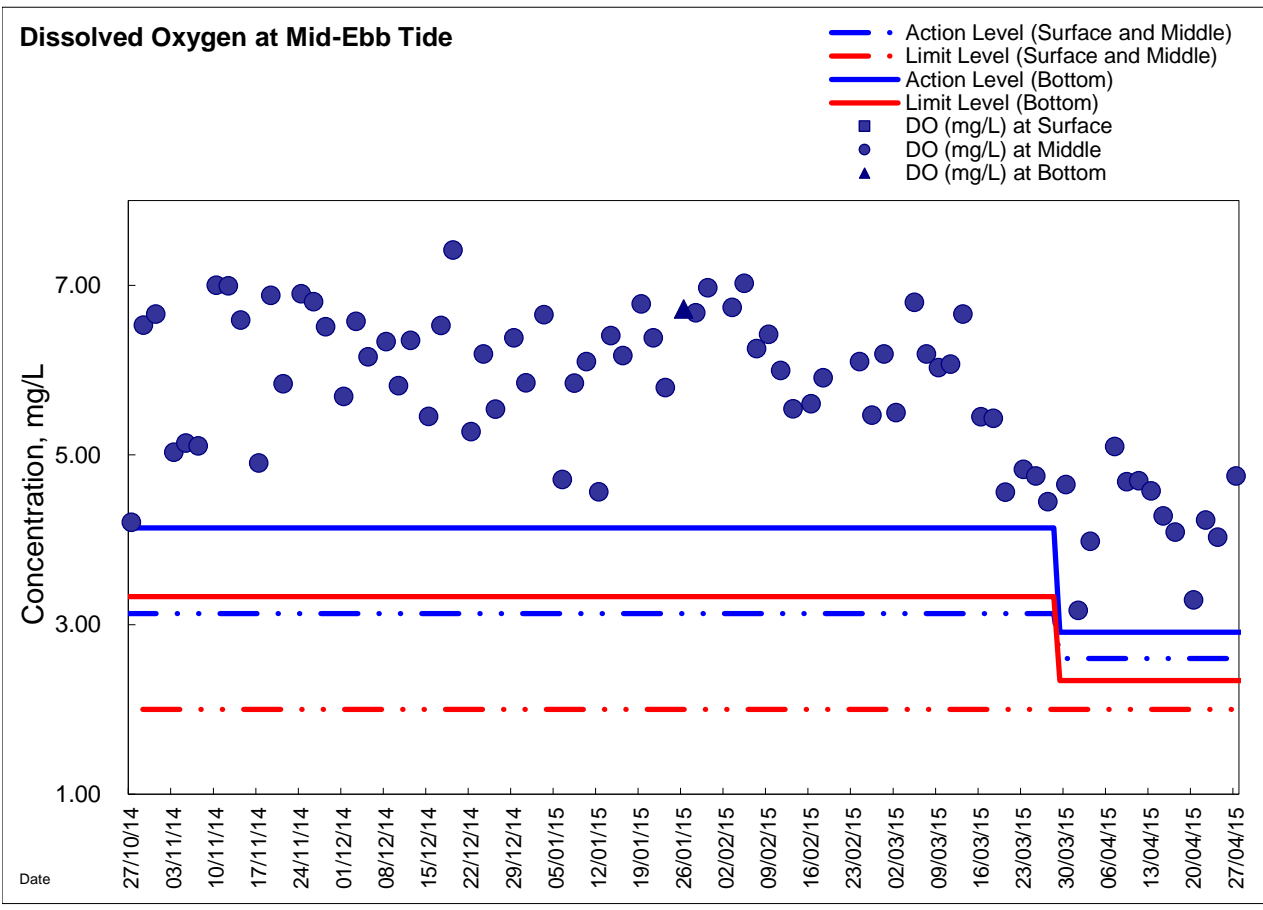
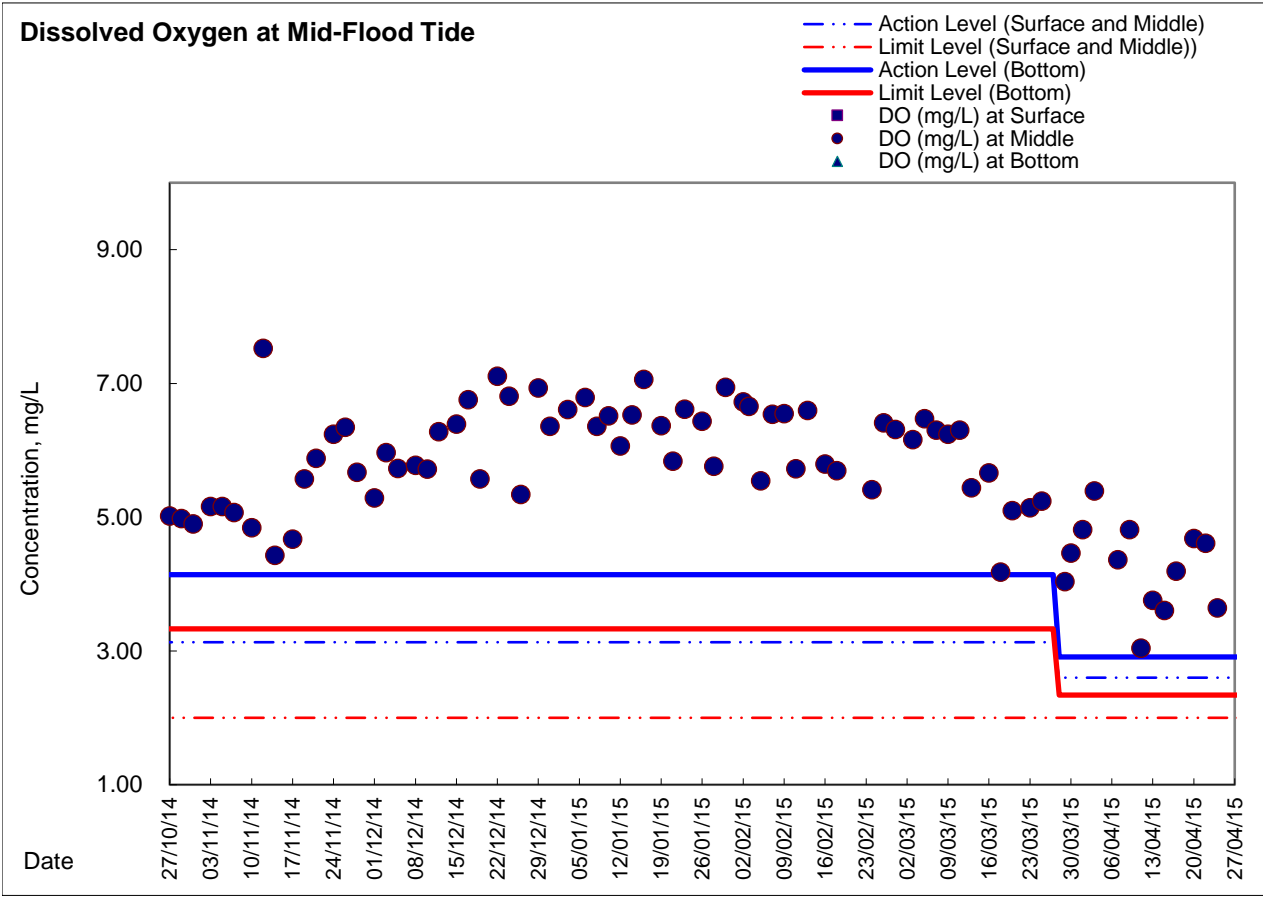
**Water Monitoring Result at Ex-WPCWA SE - South-eastern corners of ex-Public Cargo Works Area  
Mid-Ebb Tide**

Date	Time	Weather Condition	Sampling Depth		Water Temperature °C			pH		Salinity ppt		DO Saturation %		DO mg/L		
			m		Value	Average	Value	Average	Value	Average	Value	Average	Value	Average		
30/3/2015	-	Cloudy	Surface	-	-	-	-	-	-	-	-	-	-	-	-	-
	-		Middle	-	-	-	-	-	-	-	-	-	-	-	-	-
	-		Bottom	-	-	-	-	-	-	-	-	-	-	-	-	-
1/4/2015	-	Fine	Surface	-	-	-	-	-	-	-	-	-	-	-	-	-
	-		Middle	-	-	-	-	-	-	-	-	-	-	-	-	
	-		Bottom	-	-	-	-	-	-	-	-	-	-	-	-	
3/4/2015	-	Sunny	Surface	-	-	-	-	-	-	-	-	-	-	-	-	-
	-		Middle	-	-	-	-	-	-	-	-	-	-	-	-	
	-		Bottom	-	-	-	-	-	-	-	-	-	-	-	-	
7/4/2015	-	Cloudy	Surface	-	-	-	-	-	-	-	-	-	-	-	-	-
	-		Middle	-	-	-	-	-	-	-	-	-	-	-	-	
	-		Bottom	-	-	-	-	-	-	-	-	-	-	-	-	
9/4/2015	-	Cloudy	Surface	-	-	-	-	-	-	-	-	-	-	-	-	-
	-		Middle	-	-	-	-	-	-	-	-	-	-	-	-	
	-		Bottom	-	-	-	-	-	-	-	-	-	-	-	-	
11/4/2015	-	Rainy	Surface	-	-	-	-	-	-	-	-	-	-	-	-	-
	-		Middle	-	-	-	-	-	-	-	-	-	-	-	-	
	-		Bottom	-	-	-	-	-	-	-	-	-	-	-	-	
13/4/2015	-	Fine	Surface	-	-	-	-	-	-	-	-	-	-	-	-	-
	-		Middle	-	-	-	-	-	-	-	-	-	-	-	-	
	-		Bottom	-	-	-	-	-	-	-	-	-	-	-	-	
15/4/2015	-	Fine	Surface	-	-	-	-	-	-	-	-	-	-	-	-	-
	-		Middle	-	-	-	-	-	-	-	-	-	-	-	-	
	-		Bottom	-	-	-	-	-	-	-	-	-	-	-	-	
17/4/2015	-	Fine	Surface	-	-	-	-	-	-	-	-	-	-	-	-	-
	-		Middle	-	-	-	-	-	-	-	-	-	-	-	-	
	-		Bottom	-	-	-	-	-	-	-	-	-	-	-	-	
20/4/2015	-	Cloudy	Surface	-	-	-	-	-	-	-	-	-	-	-	-	-
	-		Middle	-	-	-	-	-	-	-	-	-	-	-	-	
	-		Bottom	-	-	-	-	-	-	-	-	-	-	-	-	
22/4/2015	-	Sunny	Surface	-	-	-	-	-	-	-	-	-	-	-	-	-
	-		Middle	-	-	-	-	-	-	-	-	-	-	-	-	
	-		Bottom	-	-	-	-	-	-	-	-	-	-	-	-	
24/4/2015	-	Fine	Surface	-	-	-	-	-	-	-	-	-	-	-	-	-
	-		Middle	-	-	-	-	-	-	-	-	-	-	-	-	
	-		Bottom	-	-	-	-	-	-	-	-	-	-	-	-	
27/4/2015	-	Fine	Surface	-	-	-	-	-	-	-	-	-	-	-	-	-
	-		Middle	-	-	-	-	-	-	-	-	-	-	-	-	
	-		Bottom	-	-	-	-	-	-	-	-	-	-	-	-	

Remarks:  
 Single underline denotes exceedance over Action Level.  
 Double underline denotes exceedance over Limit Level.

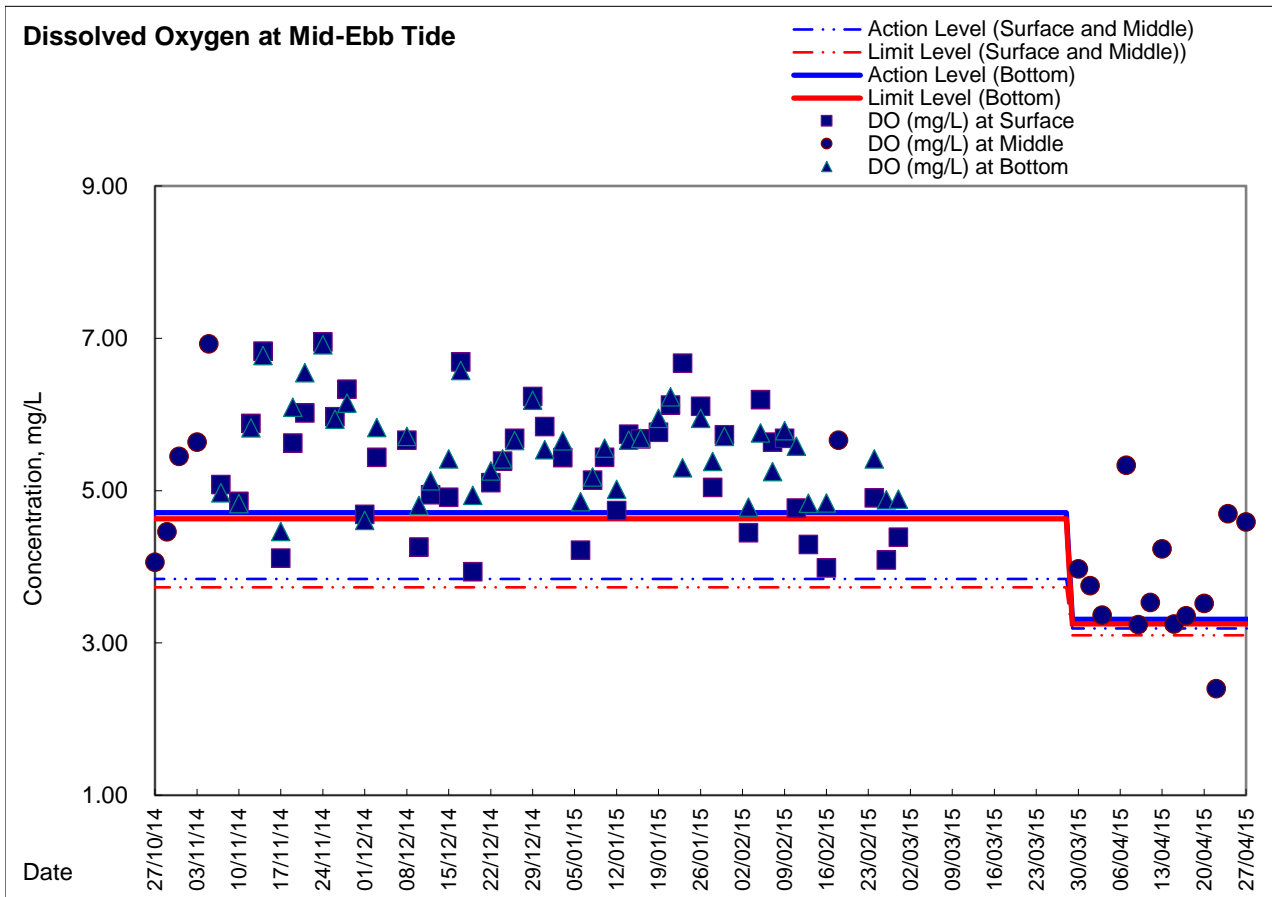
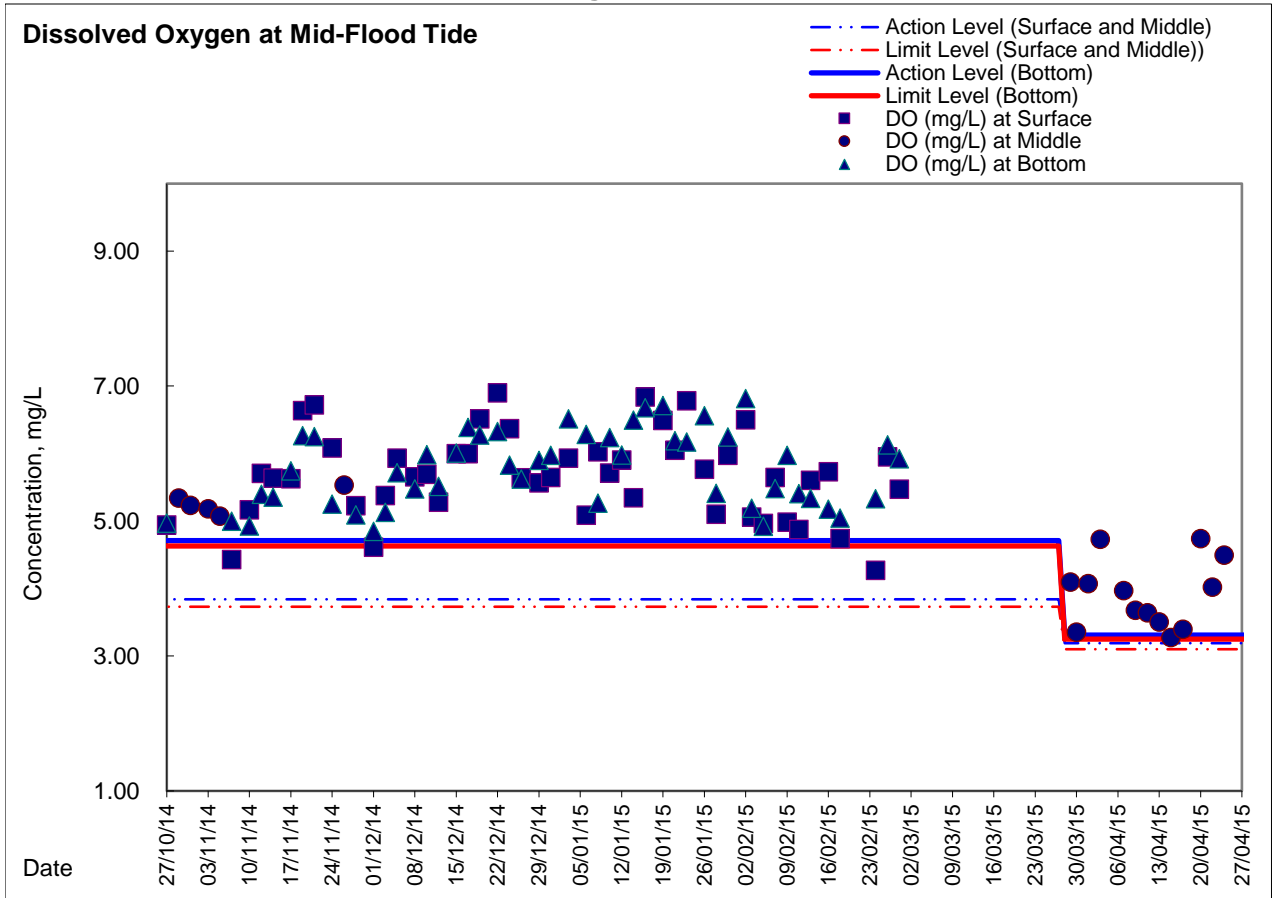


### Graphic Presentation of Enhanced Water Monitoring Results (DO) at C6 - Excelsior Hotel





### Graphic Presentation of Enhanced Water Monitoring Results (DO) at Ex-WPCWA SW - South-western corners of ex-Public Cargo Works Area







### Graphic Presentation of Enhanced Water Monitoring Results (DO) at Ex-WPCWA SE - South-eastern corners of ex-Public Cargo Works Area

